

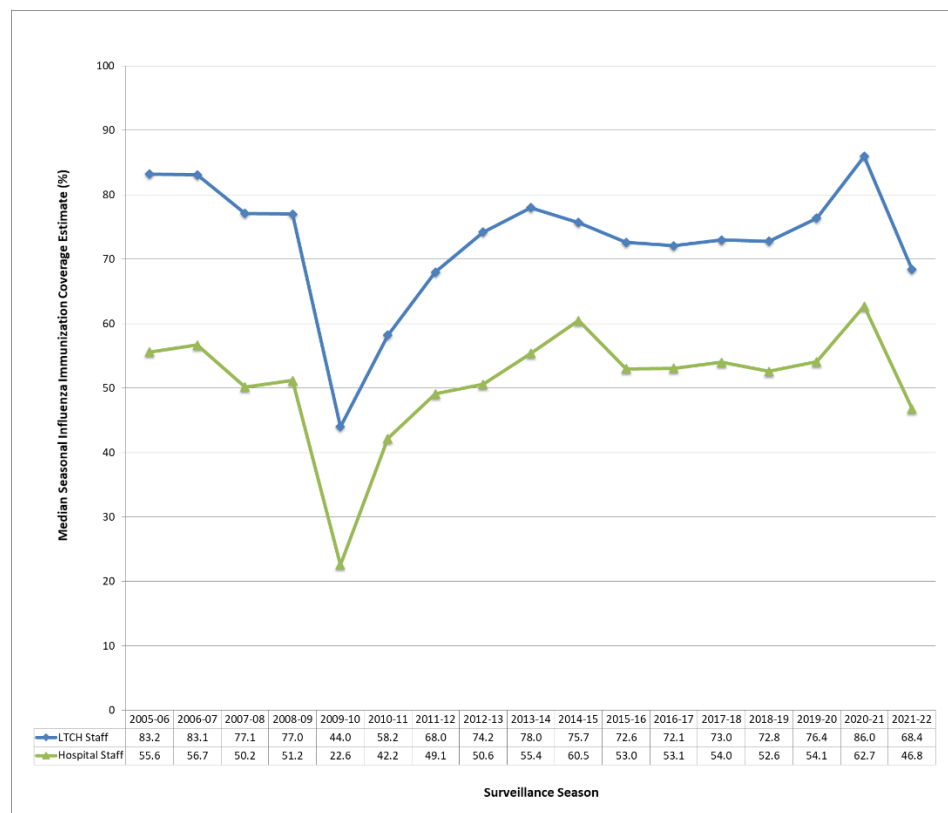
## FACT SHEET

# Median influenza immunization coverage estimates among hospital and long-term care staff, 2021-22 influenza season, Ontario

As per the Ontario [Influenza Prevention and Surveillance Protocol for Long-Term Care Homes, 2018](#) and the [Influenza Surveillance Protocol for Ontario Hospitals](#) (2018), seasonal immunization coverage estimates for staff of long term care homes (LTCH) and public hospitals are reportable to the local Medical Officer of Health. For the 2021-22 influenza season, LTCH and hospital staff immunization coverage estimates were directly reported to the Ministry of Health (MOH) by February 15, 2022. Figure A below outlines trends in reported influenza immunization coverage estimates for the seasonal influenza vaccine up to the 2021-22 surveillance season.

*The notes described below Figure A should also be considered when interpreting these estimates.*

**Figure A. Median influenza immunization coverage estimates among LTCH and hospital staff, by influenza season: Ontario, 2005-06 to 2021-22 seasons**



# Technical Notes

## Data Source

- Ontario Ministry of Health, Influenza Immunization Coverage Reporting Survey for Hospital and Long-Term Care Home Staff and Residents, analyzed by Public Health Ontario [2022/05/25].

## Data Caveats

- Similar to the 2020-21 season, data for the 2021-22 season was submitted by LTCH and hospital facilities directly to the MOH through an online survey tool. The number of LTCH and hospital sites that reported coverage estimates during this influenza season were notably lower (68.4% and 46.8%, respectively) than those reported in the 2020-21 season (86.0% and 62.7%, respectively). Differences in the reporting process prior to the 2020-21 season should be considered when interpreting coverage estimate trends over time.
- 2021-22 coverage estimates reflect staff immunization status as of November 25, 2021 (compared to December 15 between the 2012-13 and 2019-20 seasons, and November 15 prior to 2012-13), reported by LTCH and hospital facilities through the *Influenza Immunization Coverage Reporting Survey for Hospital and Long-Term Care Home Staff and Residents* by February 15, 2021 (compared to a submission date of February 1 for the 2020-21 season, and January 1 in previous seasons prior to 2019-20). Variations in the immunization status as of and data submission dates should be considered when interpreting coverage estimate trends over time.
- For the 2019-20 season, the hospital and LTCH sites that reported data were not cross-referenced against provincial facility changes. As a result, the median influenza immunization coverage rates represent all data reported by public health units unlike in other seasons.

Public Health Ontario is an agency of the Government of Ontario.

