

ENHANCED EPIDEMIOLOGICAL SUMMARY

Invasive Group A Streptococcal (iGAS) Disease in Ontario: October 1, 2025 to May 31, 2026

Published: June 2026

Introduction

An iGAS season is defined as the period spanning October 1 to September 30. This report summarizes the epidemiology of [Group A Streptococcal](#)¹ (iGAS) disease in Ontario from October 1, 2025 to May 31, 2026. It provides comparisons to iGAS activity in the three post-pandemic seasons (October 1, 2022 to September 30, 2025), as well as the five pre-pandemic seasons (October 1, 2014 to September 30, 2019). The report is based on information entered in the Ontario Ministry of Health (MOH) integrated Public Health Information System (iPHIS) database.

A description of iGAS activity and trends in Ontario is summarized in monthly reports and in season summaries located on the [iGAS Epidemiological Summaries](#) page.²

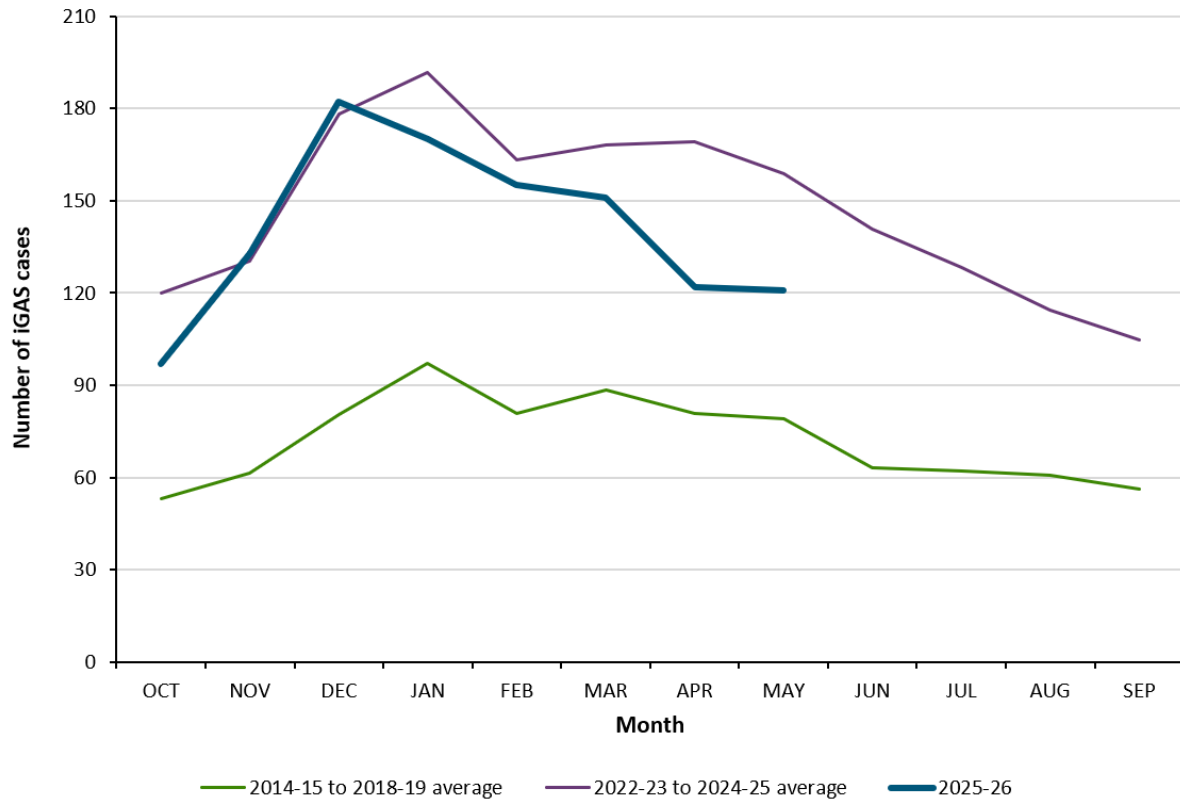
Highlights

- A total of 1,131 confirmed iGAS cases were reported in Ontario between October 1, 2025 and May 31, 2026, corresponding to an overall incidence rate of 6.8 cases per 100,000 population ([Table 1](#)).
- This represents a 15.0% reduction in the incidence rate compared to the post-pandemic average from October to May ([Table 1](#)).
- The number of cases reported between October 2025 and May 2026 was lower than or comparable to the average number of cases reported in these months in the three post-pandemic seasons, but higher than the average number of cases in the same months in the five pre-pandemic seasons ([Figure 1](#)). Case counts for the most recent month should be interpreted with caution owing to data lags.
- Eight pediatric cases (under 18 years of age) were reported in May 2026, which is lower than the average number of cases reported in the post-pandemic seasons ([Figure 2](#)).
- In May 2026, rates of confirmed iGAS cases were highest in Northeastern Public Health, Thunder Bay District Health Unit, and Lakelands Public Health ([Figure 3](#)).
- Those 65 years of age and older reported the highest incidence rate (12.5 cases per 100,000 population). Compared to the average for the three post-pandemic seasons, incidence rates this season have been lower across all age groups except those aged 14–17 years ([Table 1](#)).
- The overall proportion of iGAS cases requiring hospitalization this season to date is 81.5% compared to the post-pandemic season average of 80.7% for the same period; however interpretation of the data should consider the possible impact of lags in reporting ([Table 2](#)).

- As of May 31, 2026, seven fatal pediatric iGAS cases and 102 fatal adult iGAS cases have been reported for the current season ([Table 2](#)).
- The proportion of fatal cases among children (cases under 18 years of age) in the 2025-26 season was 9.9% (7/71) compared to 7.4% (30/407) during the same period across the three post-pandemic seasons.
- The proportion of fatal cases among adults (cases \geq 18 years of age) in the 2025-26 season was 9.6% (102/1,059) compared to 13.2% (451/3,428) during the same period across the three post-pandemic seasons.
- Interpretation of the data should consider the possible impact of lags in reporting.
- Among iGAS cases in the 2025-26 season to date, the most commonly reported *emm* types were *emm5*, *emm59*, *emm41*, and *emm83* in adults and *emm4* and *emm3* in children ([Table 3](#)).
- *Emm* types were available for 69.7% of adult cases, and 56.3% of pediatric cases.
- *Emm1*, typically among the most frequently reported *emm* types in Ontario, has been found infrequently so far this season.
- These data are expected to change because *emm* types are often confirmed after initial public health notification and follow up with the case.

Trends

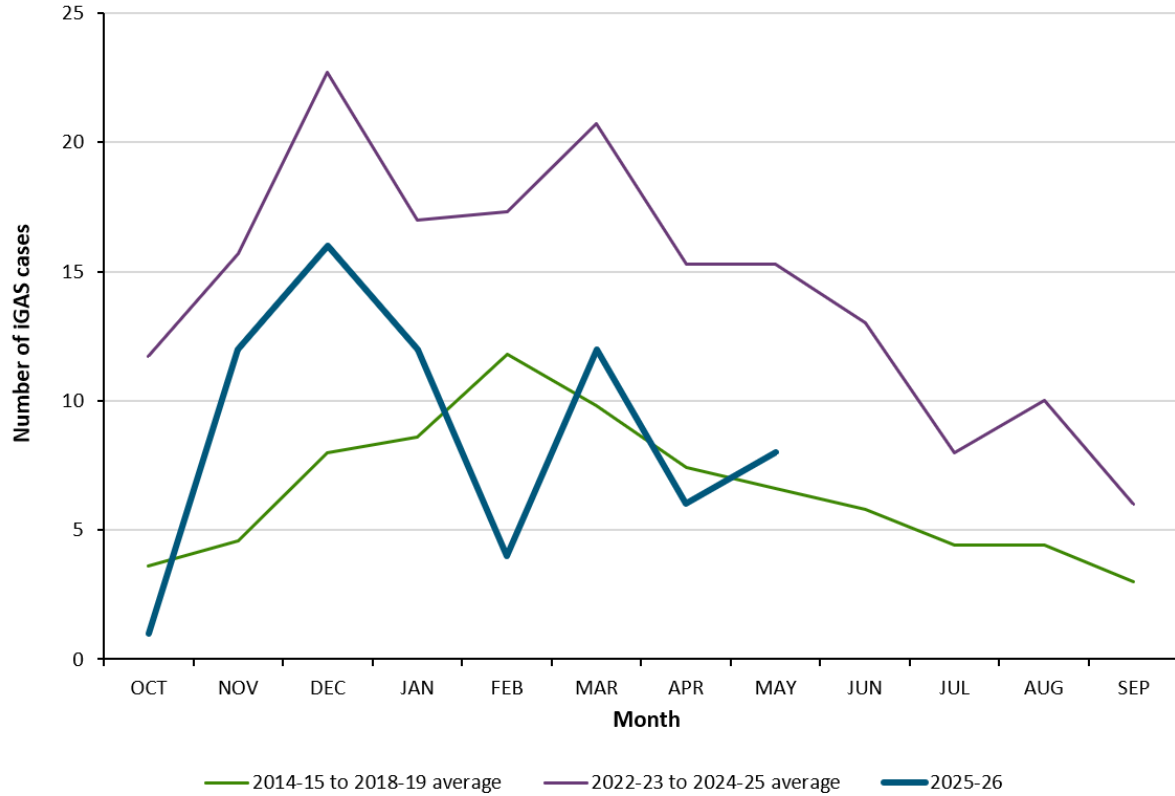
Figure 1: Confirmed iGAS Case Counts by Month for All Ages: Current Season (October 1, 2025 – May 31, 2026) Compared to the Post-Pandemic and the Pre-Pandemic Season Averages*



Data source: iPHIS

*Data for the current season (2025-2026) includes cases reported up to May 31, 2026. The three post-pandemic seasons include cases reported from October 1, 2022 to September 30, 2025. The five pre-pandemic seasons include cases reported from October 1, 2014 to September 30, 2019. Data for the most recent reporting month should be interpreted with caution due to reporting lags.

Figure 2: Confirmed iGAS Case Counts by Month in Children 0-17 Years of Age: Current Season (October 1, 2025 – May 31, 2026) Compared to the Post-Pandemic and Pre-Pandemic Season Averages*



Data source: iPHIS

*Data for the 2025-2026 season includes cases reported up to May 31, 2026. The three post-pandemic seasons include cases reported from October 1, 2022 to September 30, 2025. The five pre-pandemic seasons include cases reported from October 1, 2014 to September 30, 2019. Data for the most recent reporting month should be interpreted with caution due to reporting lags.

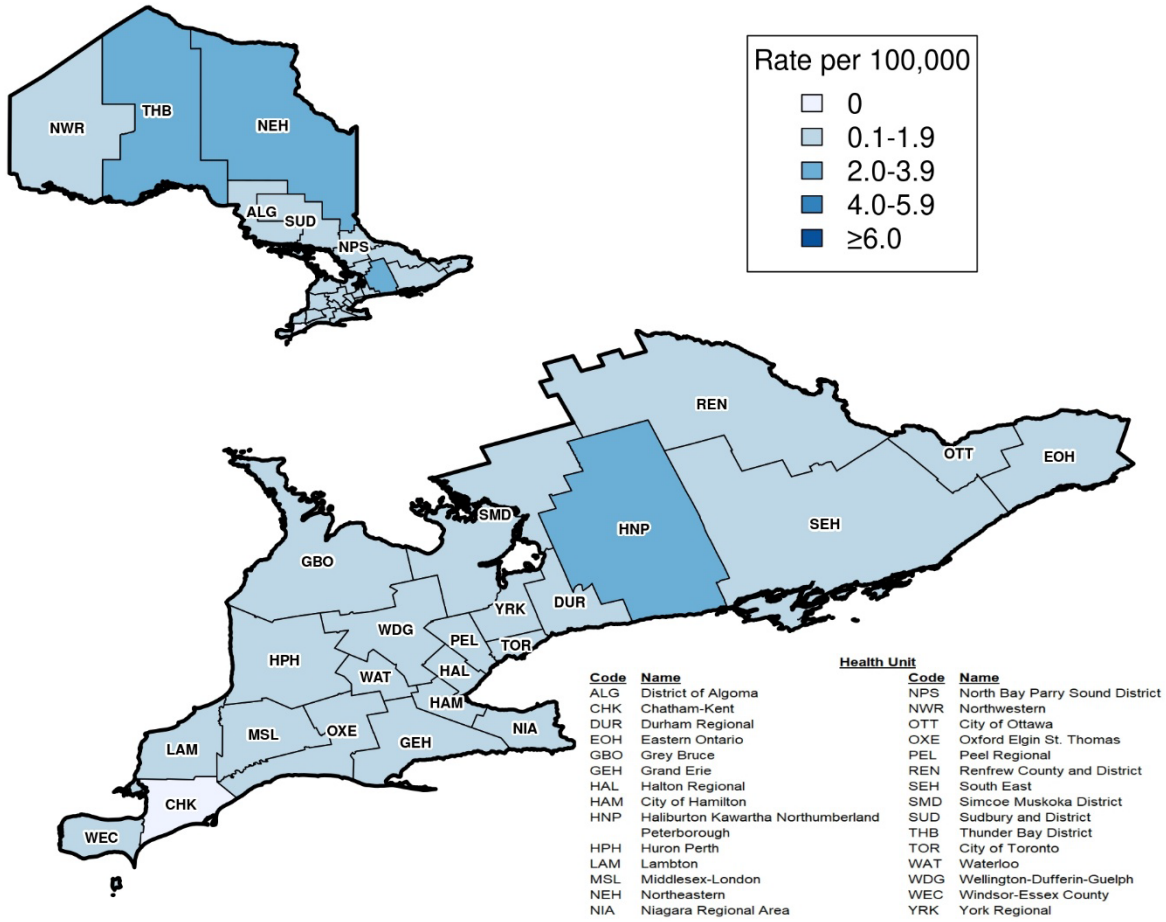
Table 1: Confirmed iGAS Cases and Rate (per 100,000 Population) by Age Group in Ontario: Current Season (October 1, 2025 – May 31, 2026) Compared to the Post-Pandemic Season Average (October 1, 2022 – May 31, 2025)*

Age Group (years)	Current season: Total number of cases reported (October 1, 2025 – May 31, 2026)	Current season: Rate per 100,000 population (October 1, 2025 – May 31, 2026)	Post-pandemic season: Average number of cases reported (October 1, 2022 – May 31, 2025)	Post-pandemic season: Average rate per 100,000 population (October 1, 2022 – May 31, 2025)	Percentage change in current season rate compared to post-pandemic season average
< 1	5	3.5	12.7	9.2	-62.0%
1 – 4	21	3.6	48.7	8.5	-57.6%
5 – 9	26	3.3	47.7	5.9	-44.1%
10 – 13	9	1.3	18.3	2.7	-51.9%
14 – 17	10	1.4	8.3	1.2	+16.7%
18 – 64	664	6.3	701.3	6.9	-8.7%
≥ 65	395	12.5	441.3	14.9	-16.1%
Unknown	1	N/A	0.7	N/A	N/A
Total	1,131	6.8	1,279	8.0	-15.0%

Data source: iPHIS

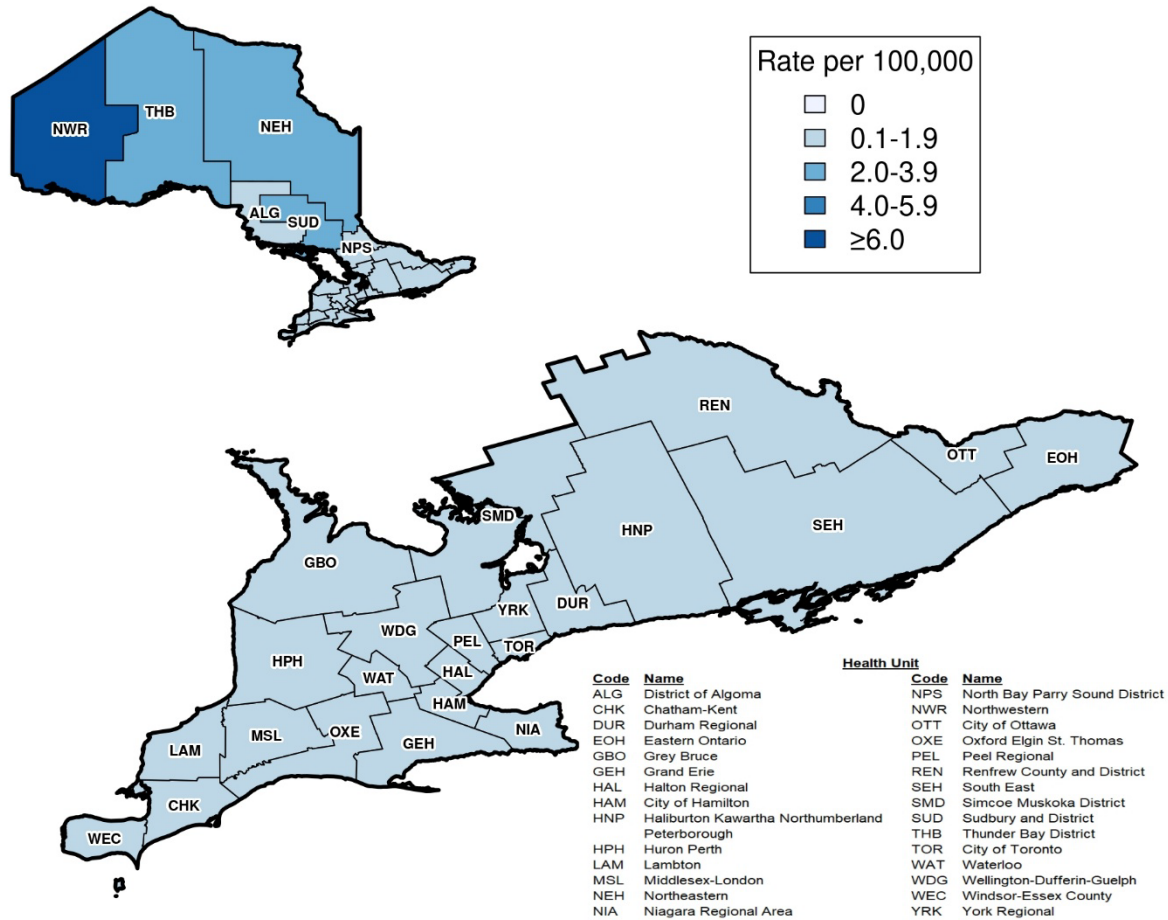
*To ensure comparability with the current season, only confirmed iGAS case data reported during the same period in each post-pandemic season are included.

Figure 3: Rate of Confirmed Cases of iGAS Reported in May 2026 by Public Health Unit in Ontario



Data source: iPHIS

Figure 4: Average Monthly Rate of Confirmed Cases of iGAS Reported in the Current Season (October 1, 2025 – May 31, 2026) by Public Health Unit in Ontario*



Data source: iPHIS

*The average monthly rate was determined by dividing the cumulative rate of confirmed iGAS cases for each PHU by the number of months included in the reporting period (i.e., for data captured until May 31, 2026, the cumulative rate was divided by eight months to determine the monthly rate for each PHU).

Severity

Table 2: Severe Outcomes for Confirmed iGAS Cases by Age Group and Season in Ontario: Current Season (October 1, 2025 – May 31, 2026) Compared to the Post-Pandemic Season Average (October 1, 2022 – May 31, 2025)*

Age Group (years)	Current season: Number (%) of cases hospitalized (October 1, 2025 – May 31, 2026)	Post-pandemic season: Average number (%) of cases hospitalized (October 1, 2022 – May 31, 2025)	Current season: Number (%) of cases with a fatal outcome (October 1, 2025 – May 31, 2026)	Post-pandemic season: Average number (%) of cases with a fatal outcome (October 1, 2022 – May 31, 2025)
< 1	3/5 (60.0%)	9.7/12.7 (76.4%)	1/5 (20.0%)	1.3/12.7 (10.2%)
1 – 4	14/21 (66.7%)	41.7/48.7 (85.6%)	2/21 (9.5%)	4.0/48.7 (8.2%)
5 – 9	19/26 (73.1%)	42.0/47.7 (88.1%)	2/26 (7.7%)	2.7/47.7 (5.7%)
10 – 13	7/9 (77.8%)	15.3/18.3 (83.6%)	2/9 (22.2%)	1.3/18.3 (7.1%)
14 – 17	9/10 (90.0%)	6.3/8.3 (75.9%)	0/10 (0.0%)	0.7/8.3 (8.4%)
18 – 64	535/664 (80.6%)	555.3/701.3 (79.2%)	50/664 (7.5%)	76.3/701.3 (10.9%)
≥65	335/395 (84.8%)	362.0/441.3 (82.0%)	52/395 (13.2%)	74.0/441.3 (16.8%)
Unknown	0/1 (0.0%)	0.0/0.7 (0.0%)	0/1 (0.0%)	0/0.7 (0.0%)
Total	922/1,131 (81.5%)	1,032.3/1,279 (80.7%)	109/1,131 (9.6%)	160.3/1,279 (12.5%)

Data source: iPHIS

*To ensure comparability with the current season, only confirmed iGAS case data reported during the same period in each post-pandemic season are included.

Table 3: Number (%) of Most Commonly Reported *Emm* Types among Confirmed iGAS Cases in Ontario by Age Group*: Current Season (October 1, 2025 – May 31, 2026) Compared to the Post-Pandemic Season Average (October 1, 2022 – May 31, 2025)**

Most commonly reported <i>emm</i> type by rank	Current season: ≥18 years of age (October 1, 2025 – May 31, 2026)	Post-pandemic season: ≥18 years of age average (October 1, 2022– May 31, 2025)	Current season: <18 years of age (October 1, 2025 – May 31, 2026)	Post-pandemic season: <18 years of age average (October 1, 2022– May 31, 2025)
<i>emm</i> 5	116 (15.7%)	14.0 (1.5%)	1 (2.5%)	0.7 (0.6%)
<i>emm</i> 59	86 (11.7%)	41.3 (4.5%)	2 (5.0%)	1.0 (0.9%)
<i>emm</i> 41	54 (7.3%)	49.0 (5.3%)	0 (0.0%)	0.7 (0.6%)
<i>emm</i> 83	49 (6.6%)	26.3 (2.8%)	0 (0.0%)	0.3 (0.3%)
<i>emm</i> 49	48 (6.5%)	78.0 (8.4%)	0 (0.0%)	1.7 (1.5%)
<i>emm</i> 74	43 (5.8%)	56.0 (6.0%)	0 (0.0%)	0.7 (0.6%)
<i>emm</i> 44	42 (5.7%)	1.0 (0.1%)	1 (2.5%)	0.0 (0.0%)
<i>emm</i> 3	39 (5.3%)	30.7 (3.3%)	10 (25.0%)	8.0 (7.2%)
<i>emm</i> 28	30 (4.1%)	27.7 (3.0%)	1 (2.5%)	1.7 (1.5%)
<i>emm</i> 92	24 (3.3%)	46.0 (5.0%)	1 (2.5%)	0.7 (0.6%)
<i>emm</i> 1	21 (2.8%)	194.0 (21.0%)	2 (5.0%)	58.7 (53.0%)
<i>emm</i> 4	19 (2.6%)	19.0 (2.1%)	14 (35.0%)	7.7 (7.0%)
Other	167 (22.6%)	343.0 (37.0%)	8 (20.0%)	28.8 (26.0%)
Total with <i>emm</i> type	738 (69.7%)	926.0 (81.1%)	40 (56.3%)	110.7 (81.6%)
Total without <i>emm</i> type	321 (30.3%)	216.3 (18.9%)	31 (43.7%)	25.0 (18.4%)
Total	1,059 (100.0%)	1,142.3 (100.0%)	71 (100.0%)	135.7 (100.0%)

Data source: iPHIS

* Cases with an unknown age are excluded from this table.

**To ensure comparability with the current season, only confirmed iGAS case data reported during the same period in each post-pandemic season are included.

Technical Notes

- The data for this report were based on information entered in iPHIS as of:
 - **June 8, 2026 at 9 a.m.** for cases reported October 1, 2024 onwards
 - **November 10, 2025 at 9 a.m.** for cases reported during the five pre-pandemic seasons (October 1, 2014 to September 30, 2019) and the 2022-23 (October 1, 2022 to September 30, 2023) and 2023-24 (October 1, 2023 to September 30, 2024) seasons.
- iPHIS is a dynamic disease reporting system that allows ongoing updates to previously entered data. As a result, data extracted from iPHIS represent a snapshot at the time of extraction and may differ from previous or subsequent reports.
- These data only represent laboratory-confirmed cases of iGAS reported to public health and recorded in iPHIS. As a result, all case counts are subject to varying degrees of underreporting due to a variety of factors, such as disease awareness and medical care seeking behaviours that may depend on severity of illness, clinical practices, and changes in laboratory testing and reporting behaviours.
- Population estimates used to calculate rates for total cases were calculated using the Ontario 2025 and 2026 population projections³, sourced from the Ontario Ministry of Finance, and Ontario 2015 to 2024 population estimates, sourced from Statistics Canada.⁴
- Only iGAS cases meeting the confirmed case classification as listed in the Ontario Ministry of Health (MOH) surveillance case definitions are included in the reported case counts.¹
 - Provincial surveillance case definitions available online under the Infectious Diseases Protocol are the most current.
 - Changes to provincial surveillance case definitions and disease classifications have occurred over the years and thus may impact the analysis of trends over time. Cases are classified in iPHIS based on the Ontario MOH surveillance case definitions in use at the time the case was identified.
- Cases are reported based on the Episode Date, which is an estimate of the onset date of disease for a case. In order to determine this date, the following hierarchy exists in iPHIS: Onset Date > Specimen Collection Date > Lab Test Date > Reported Date.
 - For example: If an Onset Date exists, it will be used as the Episode Date. If Onset Date is not available, then the next available date in the hierarchy (i.e., Specimen Collection Date) will be used, and so on.
- Hospitalized iGAS cases were determined based on a reported intervention type description of “Hospitalization” or “ICU” (Intensive Care Unit) and a reported intervention start date on or after the case’s episode date.
- Fatal iGAS cases were determined based on a case outcome description of “Fatal” and the type of death not being reported as “Reportable disease was unrelated to cause of death.”
- Cases for which the Diagnosing Health Unit (DHU) was reported as Ontario Ministry of Health and Long-Term Care (MOHLTC) (to signify a case that is not a resident of Ontario) or MUSKOKA-PARRY SOUND (a public health unit that no longer exists) were excluded from this analysis.

References

1. Ontario. Ministry of Health. Ontario public health standards: requirements for programs, services and accountability. Infectious disease protocol. Appendix 1: case definitions and disease-specific information. Disease: Group A Streptococcal Disease, invasive (iGAS). Effective: January 2024 [Internet]. Toronto, ON: King's Printer for Ontario; 2024 [cited 2026 May 11]. Available from: <https://www.ontario.ca/files/2024-01/moh-ohs-group-a-streptococcal-disease-invasive-en-2024-01-09.pdf>
2. Ontario Agency for Health Protection and Promotion (Public Health Ontario). Invasive Group A Streptococcal (iGAS) Disease [Internet]. Toronto, ON: King's Printer for Ontario; 2025 [cited 2025 Oct 28]. Available from: <https://www.publichealthontario.ca/en/diseases-and-conditions/infectious-diseases/respiratory-diseases/igas>
3. Population Reporting. Population projections public health unit, 2024-2051 [data file]. Toronto, ON: Ontario. Ministry of Finance [producer]; Toronto, ON: Ontario. Ministry of Health, IntelliHealth Ontario [distributor]; [data extracted 2025 Sep 12].
4. Statistics Canada. Table 17-10-0157-01: Population estimates, July 1, (2016 census and administrative data), by age group and sex for July 1st, by health region and peer group, 2023 boundaries [Internet]. Ottawa, ON: Government of Canada; 2025 Feb 19 [extracted 2025 Feb 21].

Appendix A

**Table A1: Confirmed iGAS Case Counts by Month Across All Ages: Current Season (October 1, 2025 – May 31, 2026)*
Compared to the Post-pandemic and Pre-pandemic Seasons**

Month	2014 – 2015	2015 – 2016	2016 – 2017	2017 – 2018	2018 – 2019	2022-2023	2023 – 2024	2024 – 2025	2025 – 2026
October	31	29	55	81	70	76	168	116	97
November	42	41	63	63	99	102	157	132	133
December	72	47	95	92	96	129	257	148	182
January	78	76	96	138	97	124	267	184	170
February	42	75	87	121	80	128	192	170	155
March	62	69	102	96	114	158	189	157	151
April	55	53	82	126	89	193	165	149	122
May	63	52	76	106	99	209	144	123	121
June	49	40	68	83	75	179	113	130	-
July	41	45	72	73	79	180	110	95	-
August	39	44	61	74	85	128	111	104	-
September	35	50	55	61	81	119	102	93	-
Total	609	621	912	1,114	1,064	1,725	1,975	1,601	1,131

Data source: iPHIS *Data for the most recent reporting month should be interpreted with caution due to reporting and/or data entry lags.

Citation

Ontario Agency for Health Protection and Promotion (Public Health Ontario). Invasive Group A Streptococcal (iGAS) Disease in Ontario: October 1, 2025 to May 31, 2026. Toronto, ON: King's Printer for Ontario; 2026.

Disclaimer

This document was developed by Public Health Ontario (PHO). PHO provides scientific and technical advice to Ontario's government, public health organizations and health care providers. PHO's work is guided by the current best available evidence at the time of publication. The application and use of this document is the responsibility of the user. PHO assumes no liability resulting from any such application or use. This document may be reproduced without permission for non-commercial purposes only and provided that appropriate credit is given to PHO. No changes and/or modifications may be made to this document without express written permission from PHO.

Public Health Ontario

Public Health Ontario is an agency of the Government of Ontario dedicated to protecting and promoting the health of all Ontarians and reducing inequities in health. Public Health Ontario links public health practitioners, front-line health workers and researchers to the best scientific intelligence and knowledge from around the world.

For more information about PHO, visit publichealthontario.ca.

© King's Printer for Ontario, 2026

