

EPIDEMIOLOGICAL SUMMARY

Tuberculosis in Ontario: January 1, 2021 to December 31, 2025

Published: April 2026

Introduction

This report, to be published on a quarterly basis, provides an epidemiologic summary of tuberculosis (TB) disease and TB infection (TBI), formerly referred to as latent TB infection, in Ontario and includes information available from Ontario's integrated Public Health Information System (iPHIS) as of April 6, 2026.

The current provincial case definitions for TB disease and TBI can be found in [Appendix 1 of the Infectious Disease Protocol for Tuberculosis](#).¹

For further information regarding TB, including signs, symptoms, and how to reduce the risk of infection, visit Public Health Ontario's (PHO) [Tuberculosis \(TB\) webpage](#).²

Key Messages

- In 2025, there were 936 confirmed cases of TB disease (5.7 cases per 100,000 population). While this represents a decline from the 995 cases reported in 2024 (6.2 cases per 100,000 population), the incidence of TB disease remains higher than the rate needed to put Ontario on track to meet the 2035 pre-elimination target rate of 1.0/100,000.³
- The elevated provincial rate of confirmed TB disease cases underscores the ongoing need for effective TB prevention and care as well as ongoing local and provincial surveillance to further understand the factors that may be contributing to these recent increases.
- The COVID-19 pandemic coincided with a sharp decline in the number of provincial notifications of TBIs. The number of TBIs reported in Ontario has since increased to pre-pandemic levels. Increases in the identification and diagnosis of TBI represents additional opportunities for preventive treatment of TBI to avert future TB disease cases, an important step to meeting reduction targets for TB disease cases. Addressing TBI is a key component of the WHO's [Framework Towards TB Elimination in Low Incidence Countries](#).⁴

Highlights

TB Disease

- Between January 1, 2021 and December 31, 2025, the quarterly incidence of TB disease ranged from a low of 1.1 cases per 100,000 population to a high of 1.7 cases per 100,000 population. ([Figure 1](#))
- Rates of TB disease have been generally higher in males compared to females, with the quarterly incidence ranging between 1.1 to 2.0 cases per 100,000 population for males and between 0.9 to 1.5 cases per 100,000 population for females. ([Figure 2](#))
- Overall, adults 80 years of age and older had the highest rates of TB (range: 1.5 to 4.2 cases per 100,000 population), followed by those 20-39 years of age (range: 1.3 to 2.3 cases per 100,000 population) and those 60-79 years of age (range: 1.1 to 2.0 cases per 100,000 population). ([Figure 3](#))
- Between January 1, 2025 and December 31, 2025 (i.e., the last 12 months), Northeastern Public Health had the highest rate of TB at 14.2 cases per 100,000 population, followed by Peel Public Health, Toronto Public Health, and Northwestern Health Unit at 10.0, 9.6, and 9.5 cases per 100,000 population, respectively. ([Figure 4](#))
- Over the last five years (January 1, 2021 to December 31, 2025), the Toronto region has usually had the highest quarterly rate of TB disease (range: 2.0 to 3.4 cases per 100,000 population). ([Figure 5](#))

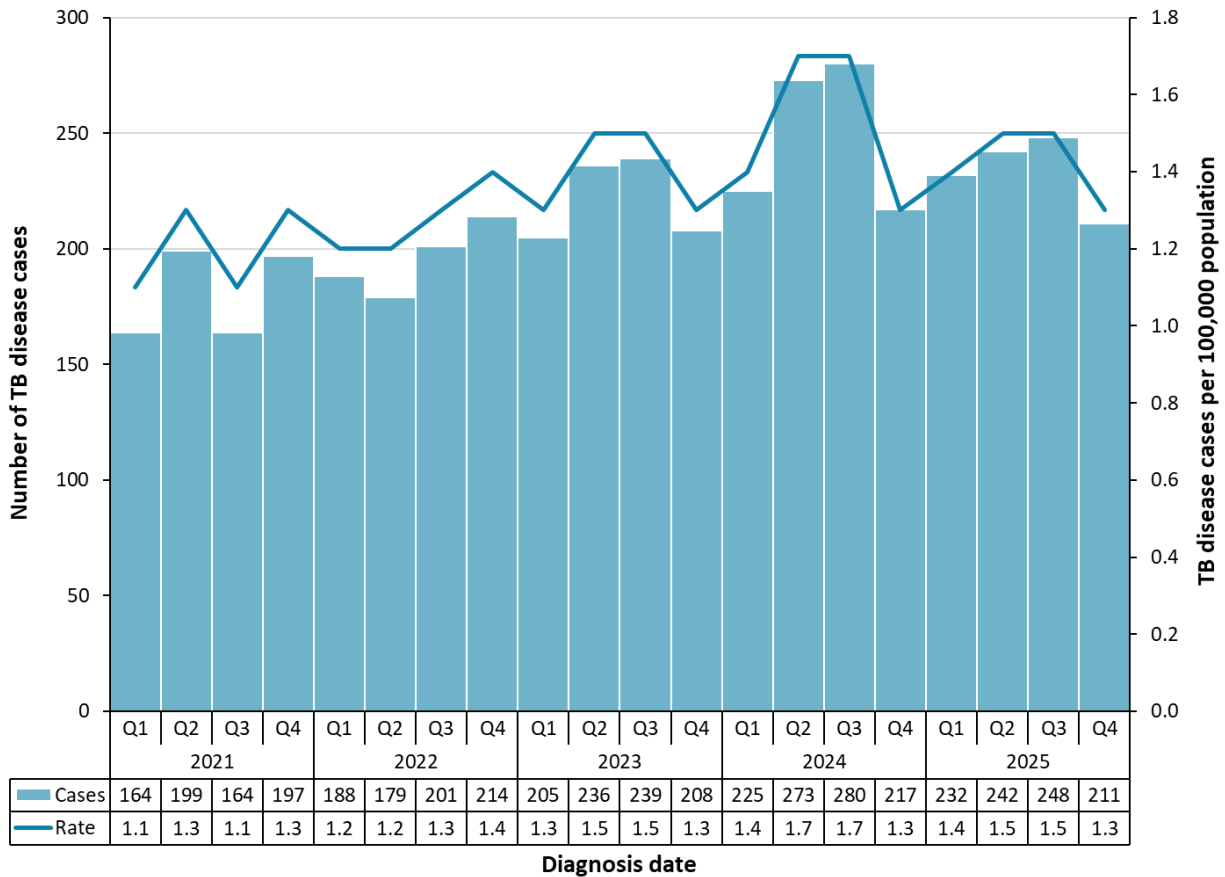
TB Infection

- Following declines in notifications during the COVID-19 pandemic, TBI rates have gradually increased, reaching an average quarterly rate of 13.8 infections per 100,000 population in the last 12 months. ([Figure 6](#))
- Rates of TBI have been consistently higher in females compared to males. Since January 1, 2021, the quarterly TBI incidence has ranged from 7.8 to 18.5 infections per 100,000 population for females and between 4.4 to 11.9 infections per 100,000 population for males. ([Figure 7](#))
- Overall, those aged 20-39 years had the highest rates of TBI which, since January 1, 2021, have ranged between 11.9 to 31.5 infections per 100,000 population. ([Figure 8](#))
- Between January 1, 2025 and December 31, 2025 (i.e., the last 12 months), Public Health Sudbury and Districts and Chatham-Kent Public Health had the highest rates of TBI at 129.2 and 116.2 infections per 100,000 population, respectively. ([Figure 9](#))
- Since January 1, 2021, the quarterly incidence rates of TBI have fluctuated widely across the regions, with the Eastern and North East regions reporting the highest rates, averaging 15.4 and 15.0 infections per 100,000 population, respectively. ([Figure 10](#))

TB Disease

Quarterly Trends

Figure 1: TB Disease Cases and Rates Per 100,000 Population by Diagnosis Date: January 1, 2021 to December 31, 2025

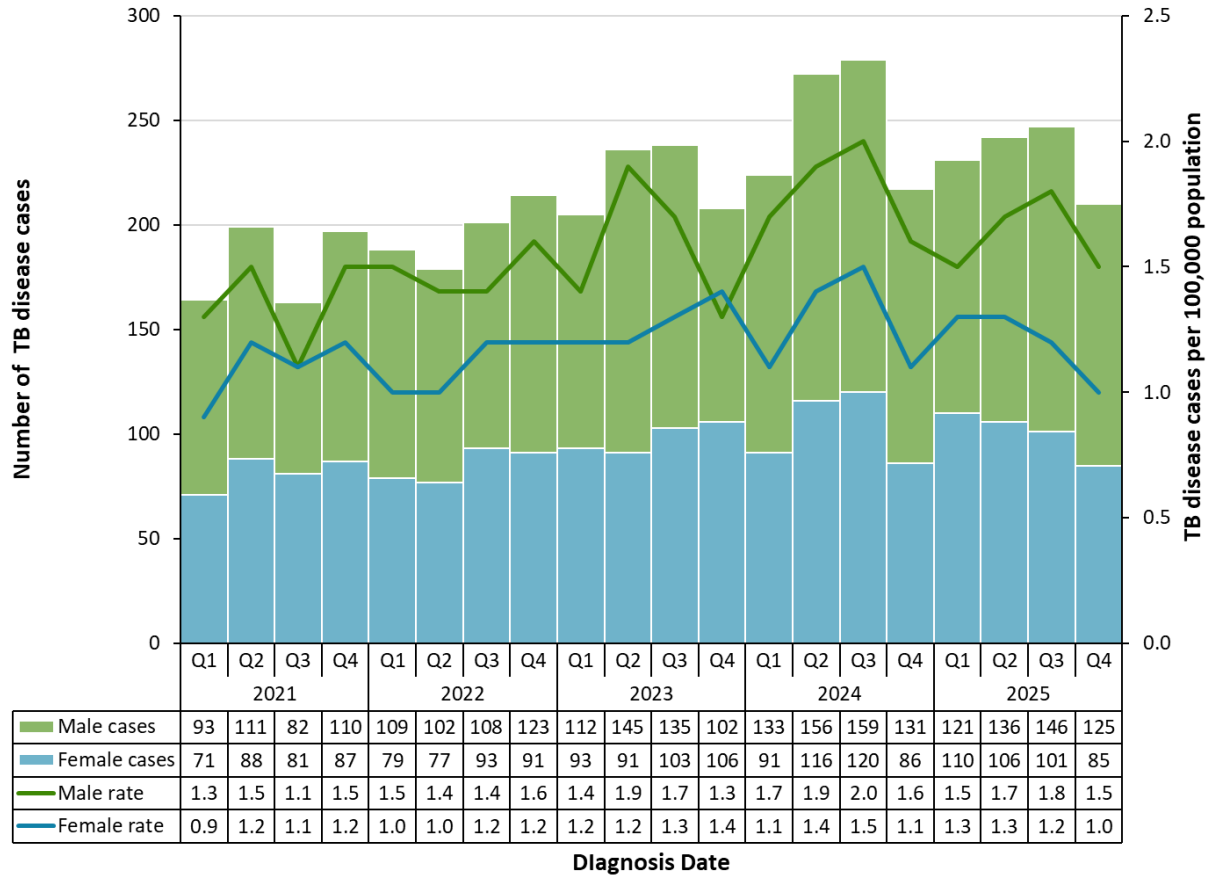


Data sources: Cases: Integrated Public Health Information System (iPHIS). Population denominators: Ontario. Ministry of Finance.⁵

Note: Q1=January 1-March 31; Q2=April 1-June 30; Q3=July 1-September 30; Q4=October 1-December 31

Sex and Age Group

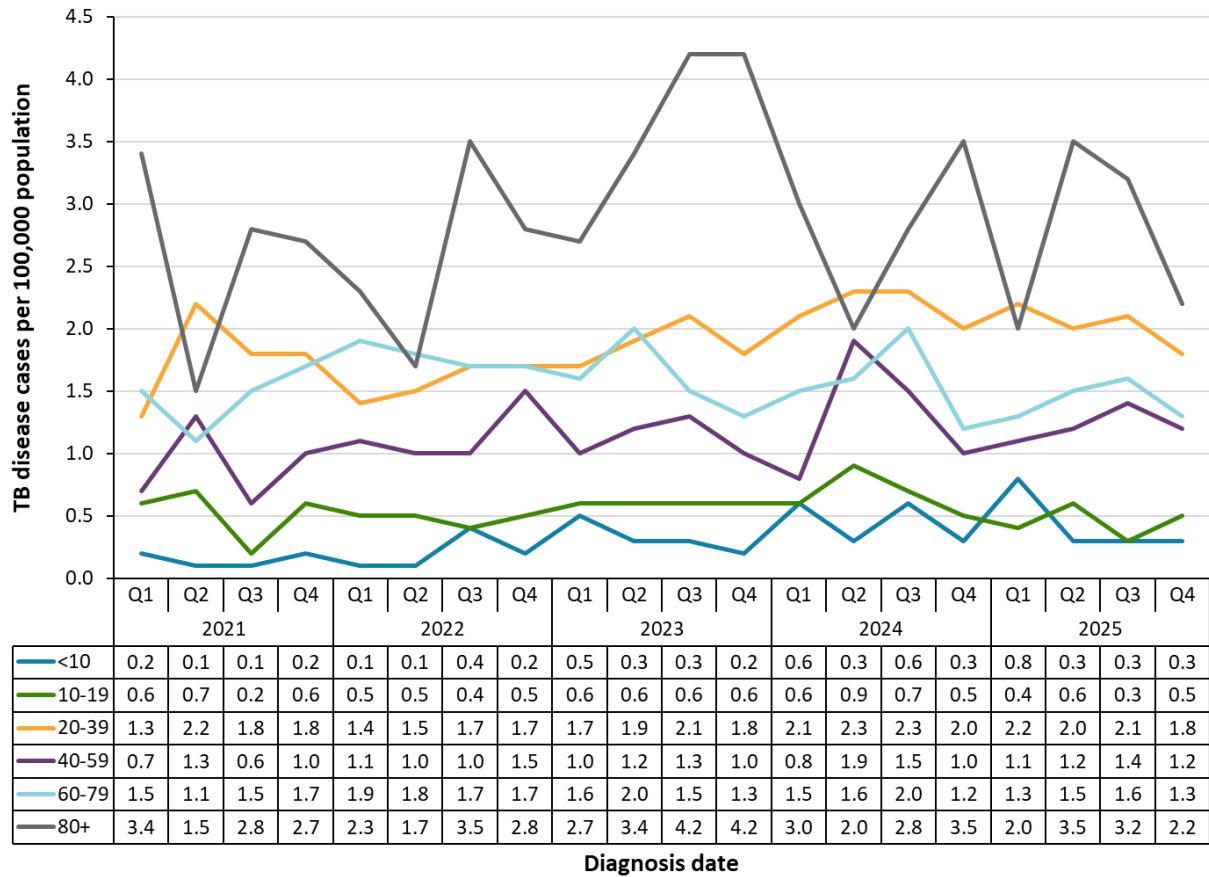
Figure 2: TB Disease Cases and Rates Per 100,000 Population by Sex and Diagnosis Date: January 1, 2021 to December 31, 2025



Data sources: Cases: Integrated Public Health Information System (iPHIS) Population denominators: Ontario. Ministry of Finance.⁵

Notes: Q1=January 1-March 31; Q2=April 1-June 30; Q3=July 1-September 30; Q4=October 1-December 31. Excludes TB disease cases that did not identify as male or female.

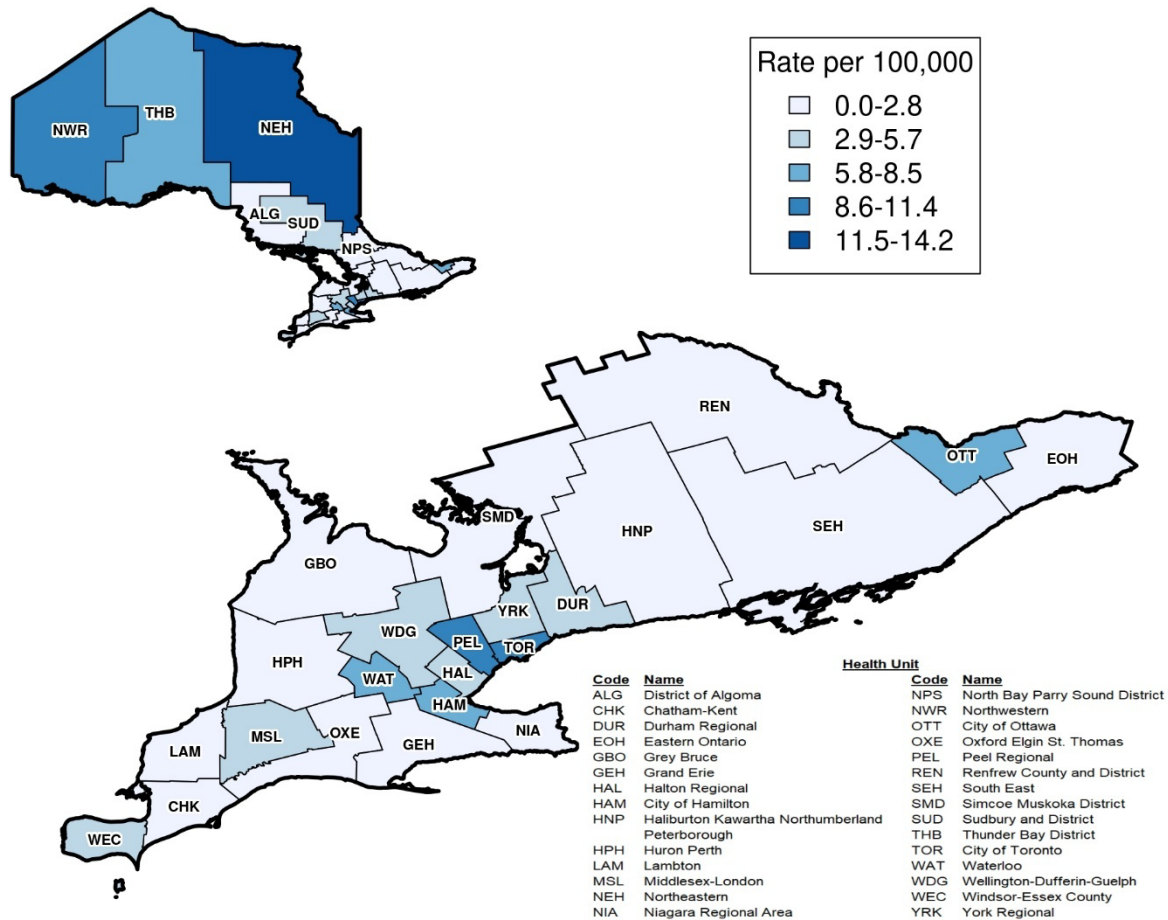
Figure 3: TB Disease Rates Per 100,000 Population by Age Group (years) and Diagnosis Date: January 1, 2021 to December 31, 2025



Data sources: Cases: Integrated Public Health Information System (iPHIS) Population denominators: Ontario Ministry of Finance.⁵
 Note: Q1=January 1-March 31; Q2=April 1-June 30; Q3=July 1-September 30; Q4=October 1-December 31.
 Unknown ages were excluded from analyses.

Geography

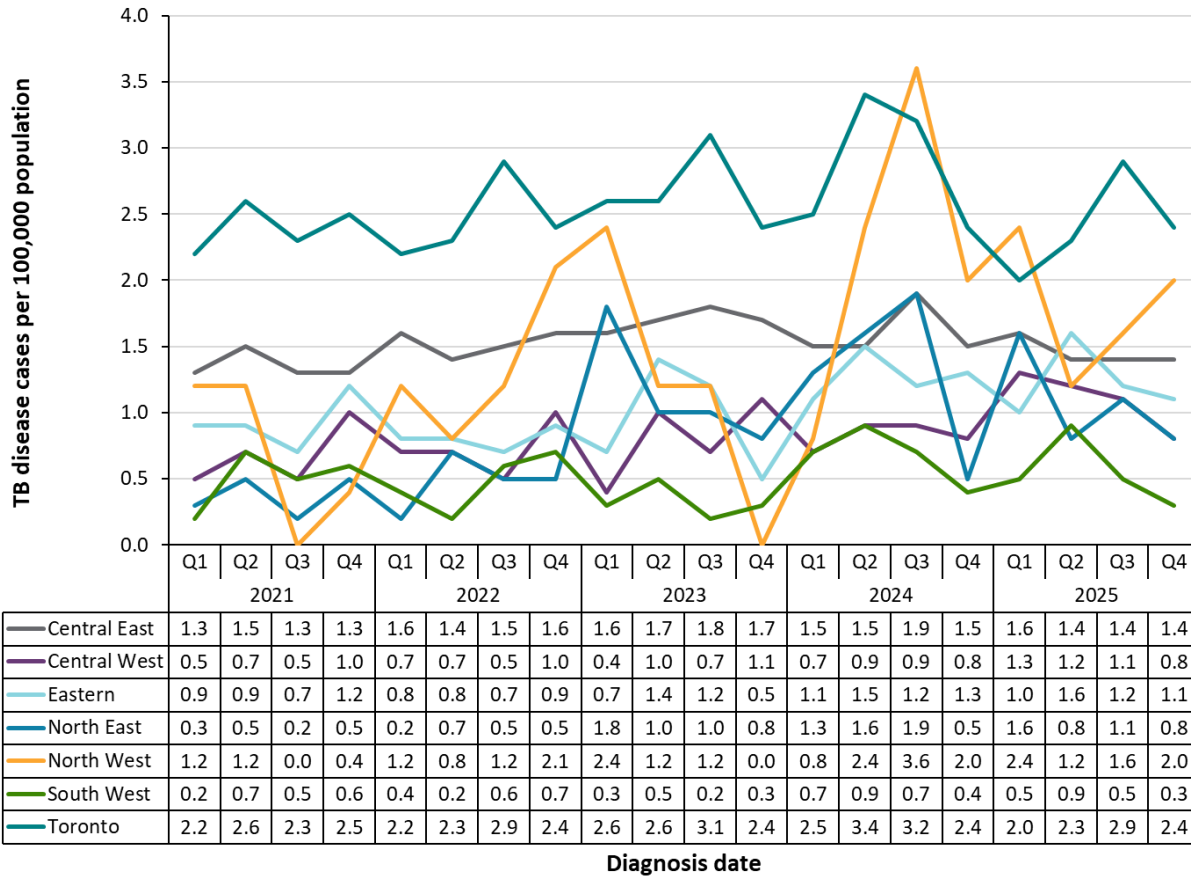
Figure 4: TB Disease Rates Per 100,000 Population by Public Health Unit: January 1, 2025 to December 31, 2025 (i.e., last 12 months)



Data sources: Cases: Integrated Public Health Information System (iPHIS). Population denominators: Ontario. Ministry of Finance.⁵

Note: See [Appendix A](#) for the full list of public health unit names and their 3-letter abbreviations, as well as annual rates by PHU for the years 2021-2025.

Figure 5: TB Disease Rates Per 100,000 Population by Provincial Region: January 1, 2021 to December 31, 2025



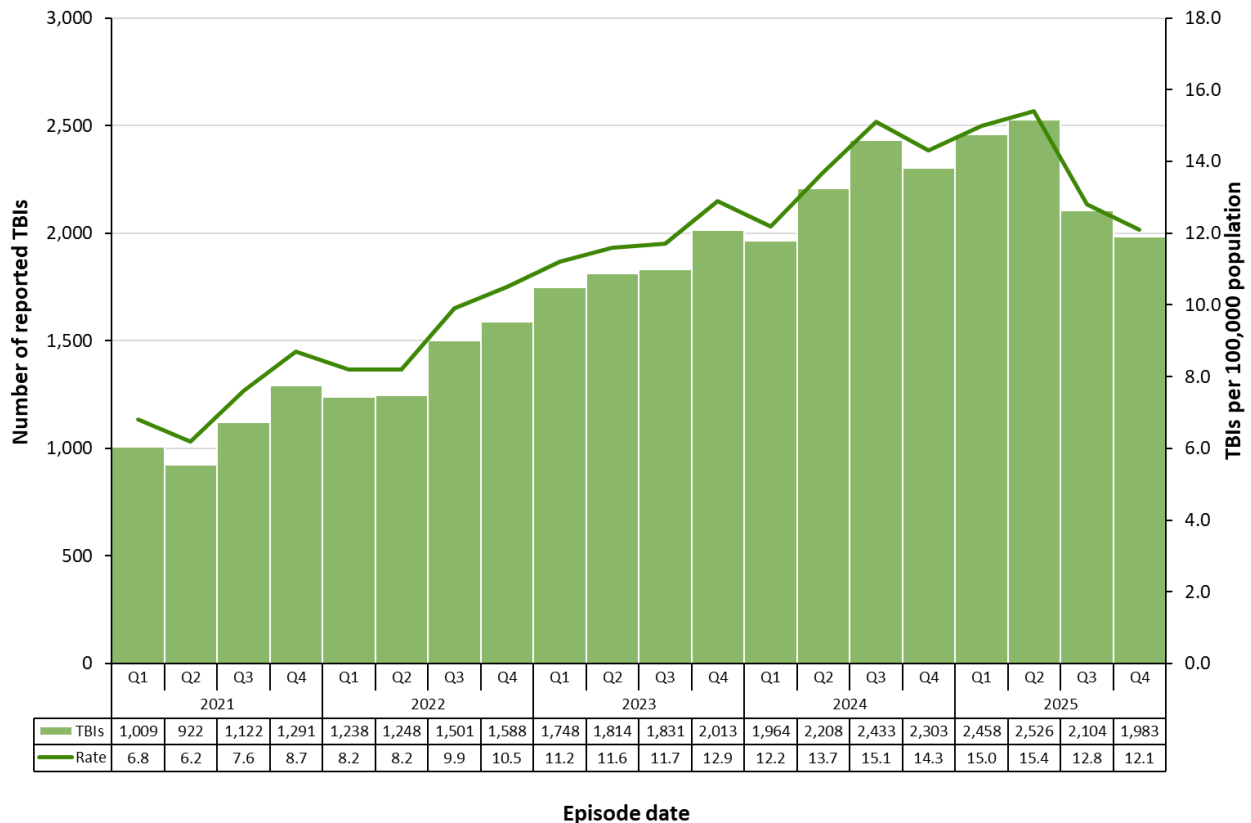
Data sources: Cases: Integrated Public Health Information System (iPHIS). Population denominators: Ontario. Ministry of Finance.⁵

Notes: Q1=January 1-March 31; Q2=April 1-June 30; Q3=July 1-September 30; Q4=October 1-December 31
The public health units that make up each provincial region can be found in [Appendix A](#).

TB Infections

Quarterly Trends

Figure 6: Reported TBI Cases and Rates Per 100,000 Population by Episode Date: January 1, 2021 to December 31, 2025

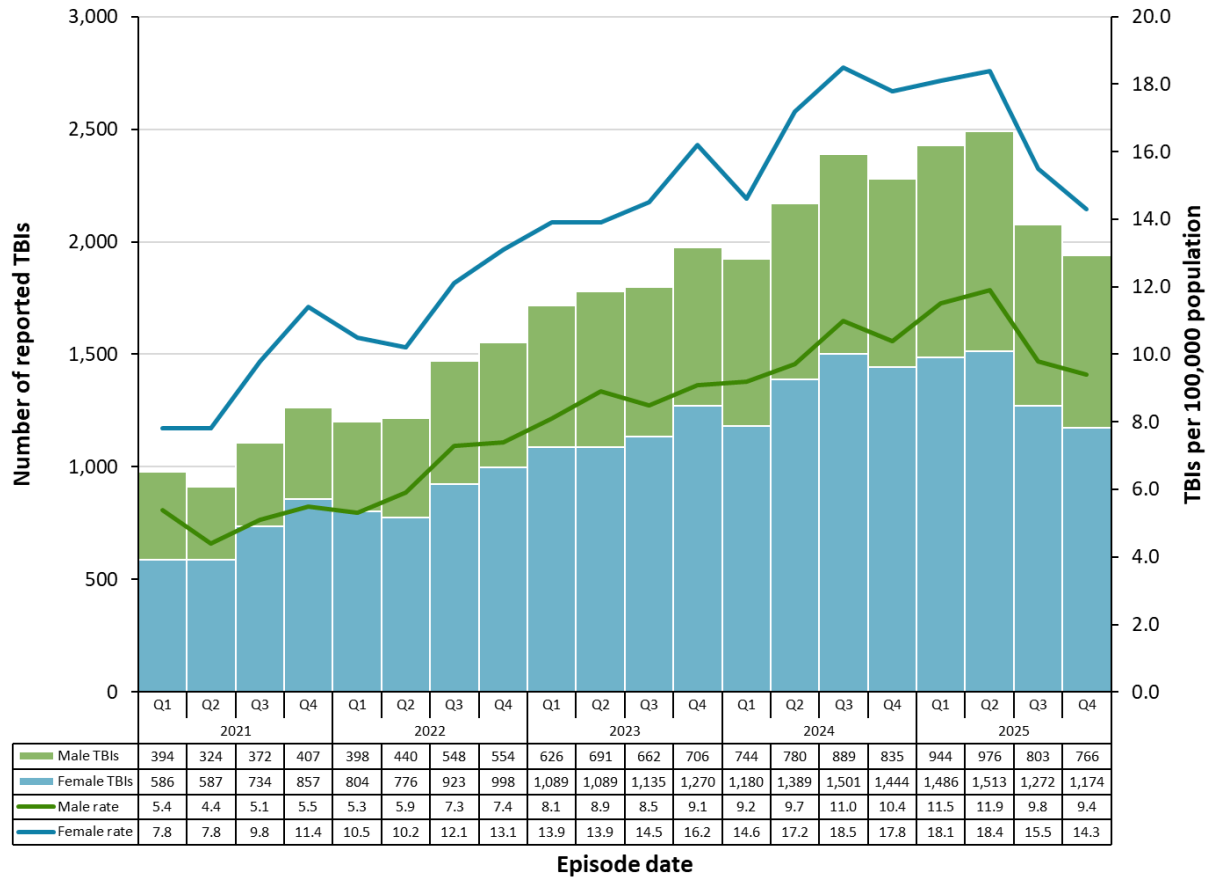


Data sources: TBIs: Integrated Public Health Information System (iPHIS). Population denominators: Ontario. Ministry of Finance.⁵

Note: Q1=January 1-March 31; Q2=April 1-June 30; Q3=July 1-September 30; Q4=October 1-December 31

Sex and Age Group

Figure 7: Reported TBI Cases and Rates Per 100,000 Population by Sex and Episode Date: January 1, 2021 to December 31, 2025

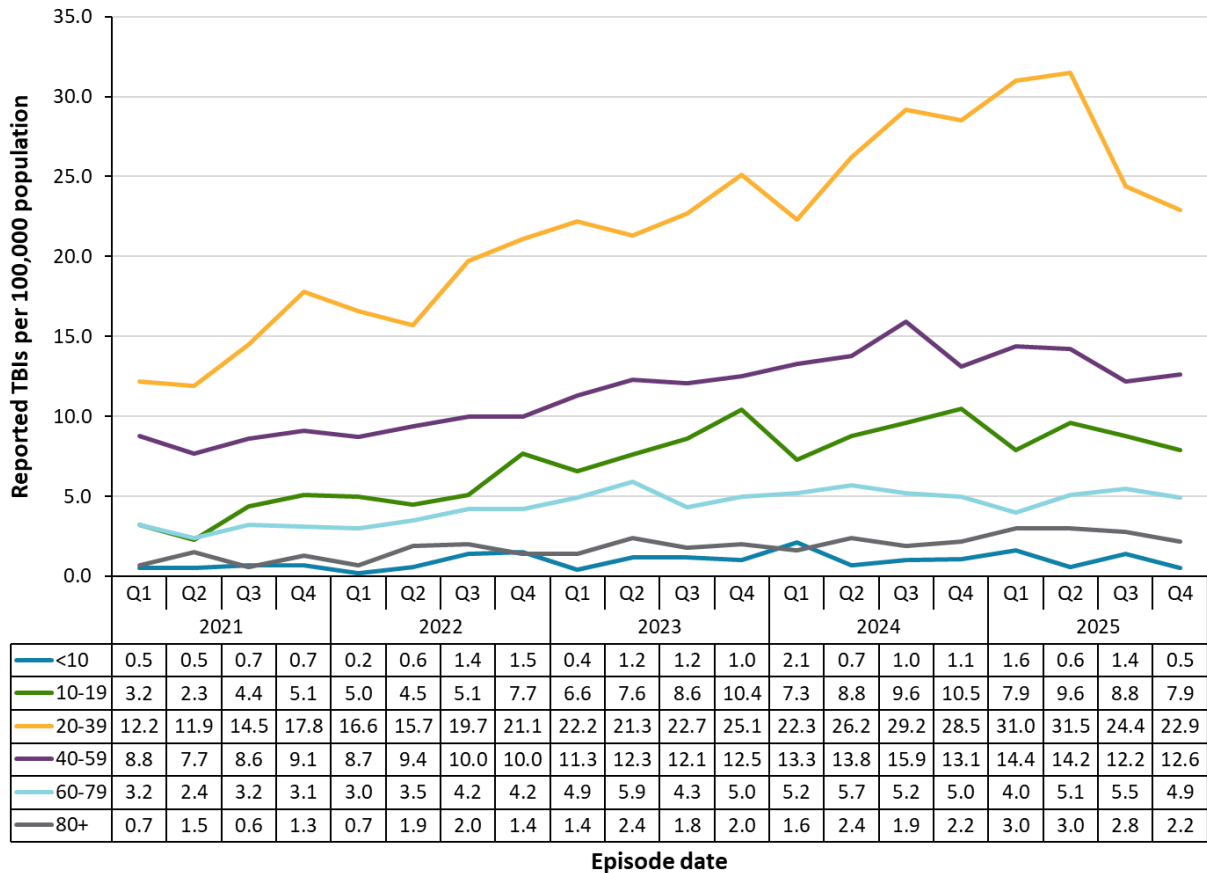


Data sources: TBIs: Integrated Public Health Information System (iPHIS) Population denominators: Ontario. Ministry of Finance.⁵

Note: Q1=January 1-March 31; Q2=April 1-June 30; Q3=July 1-September 30; Q4=October 1-December 31.

Excludes reported cases of TBI that did not identify as male or female.

Figure 8: Reported TBI Rates Per 100,000 Population by Age Group (years): January 1, 2021 to December 31, 2025



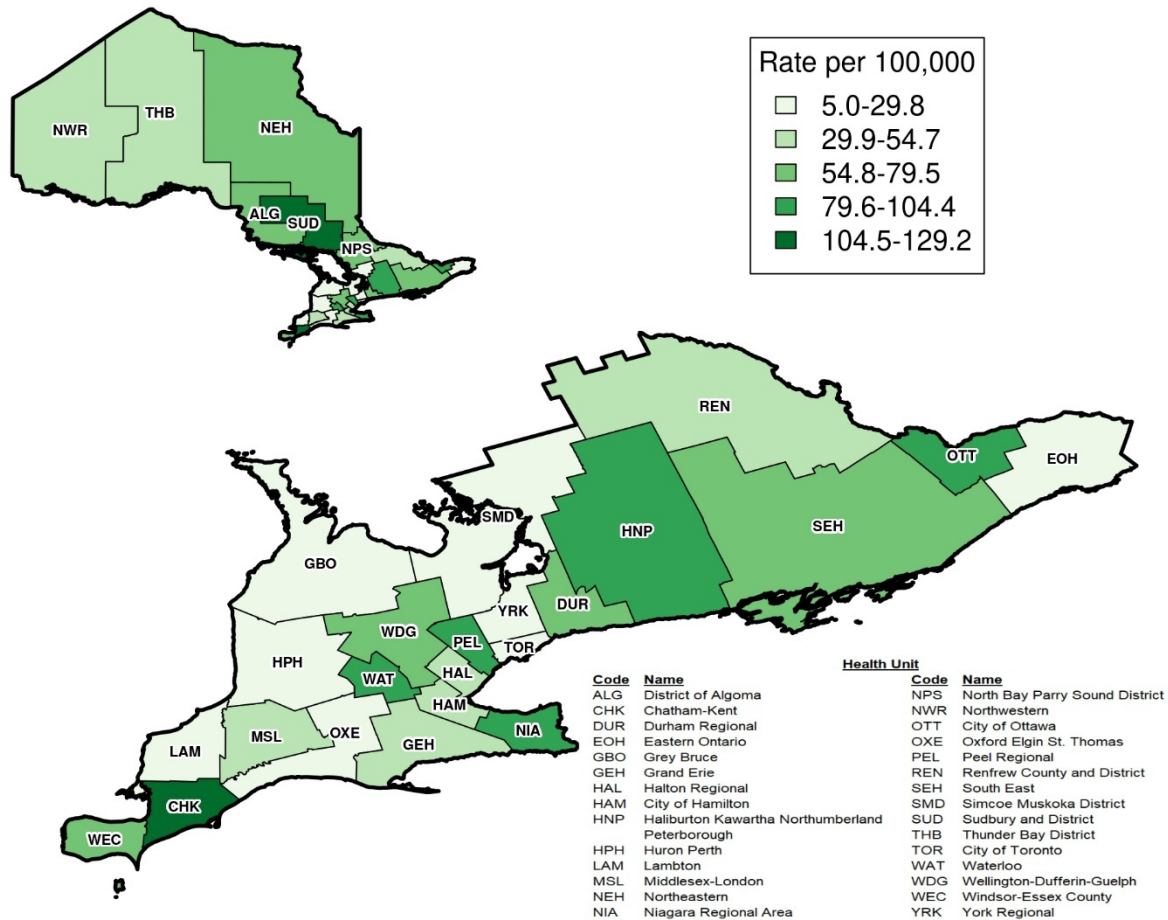
Data sources: TBIs: Integrated Public Health Information System (iPHIS). Population denominators: Ontario. Ministry of Finance.⁵

Note: Q1=January 1-March 31; Q2=April 1-June 30; Q3=July 1-September 30; Q4=October 1-December 31.

Unknown ages were excluded from analyses.

Geography

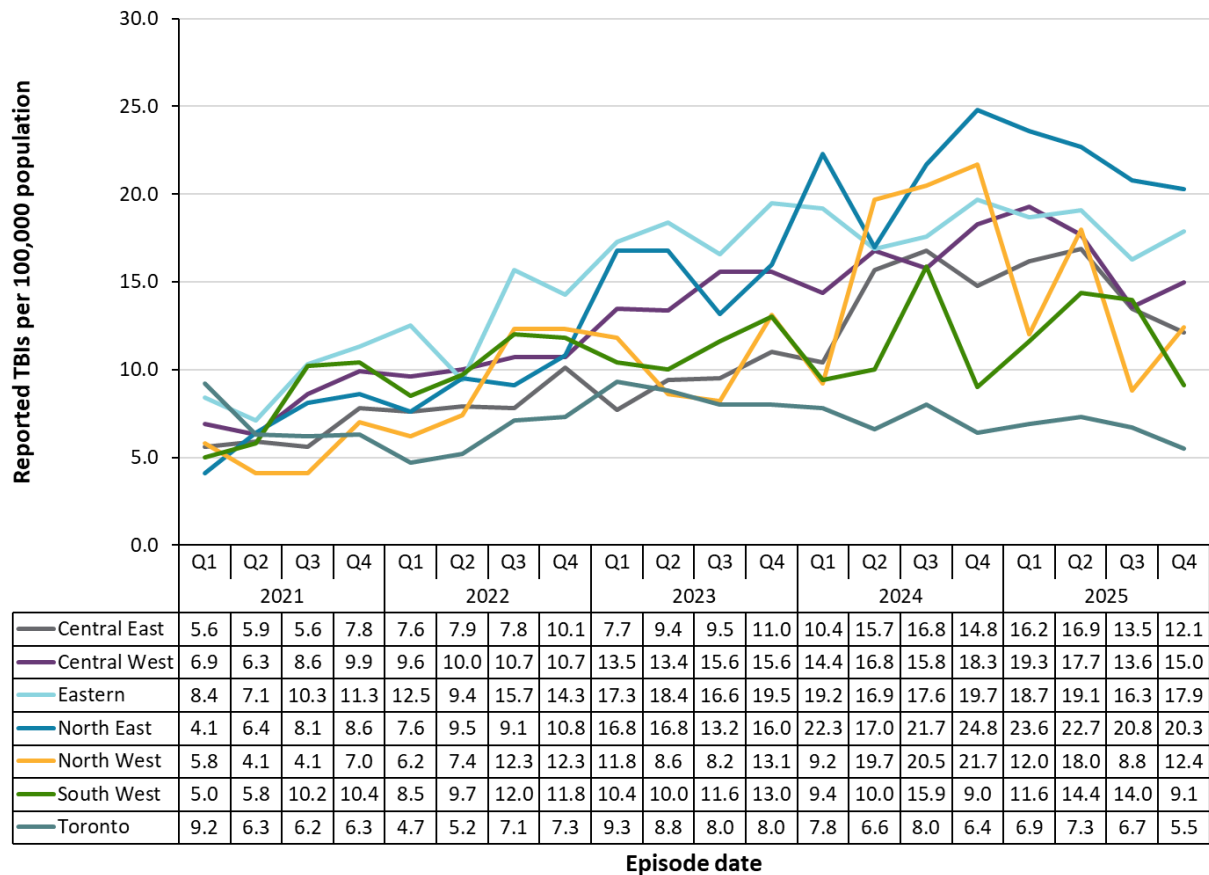
Figure 9: Reported TBI Rates Per 100,000 Population by Public Health Unit: January 1, 2025 to December 31, 2025 (i.e., last 12 months)



Data sources: TBIs: Integrated Public Health Information System (iPHIS). Population denominators: Ontario. Ministry of Finance.⁵

Note: See [Appendix B](#) for the full list of public health unit names and their 3-letter abbreviations, as well as annual rates by PHU for the years 2021-2025.

Figure 10: Reported TBI Rates Per 100,000 Population by Provincial Region: January 1, 2021 to December 31, 2025



Data sources: TBIs: Integrated Public Health Information System (iPHIS). Population denominators: Ontario. Ministry of Finance.⁵

Notes: Q1=January 1-March 31; Q2=April 1-June 30; Q3=July 1-September 30; Q4=October 1-December 31

The public health units that make up each provincial region can be found in [Appendix B](#).

Technical Notes

Data Sources

Case Data

- The data for the main portion of this report were based on information entered in the Ontario Ministry of Health (MOH) integrated Public Health Information System (iPHIS) database as of **April 6, 2026 at 9:00 a.m.**
- iPHIS is a dynamic disease reporting system that allows ongoing updates to previously entered data. As a result, data extracted from iPHIS represent a snapshot at the time of extraction and may differ from previous or subsequent reports.

Ontario Population Data

- Population estimates used to calculate rates per 100,000 population were calculated using the Ontario population estimates for 2021-2023 and population projections for 2024-2025 sourced from the Ontario Ministry of Finance.

Data Caveats

- Data reported between 2021 and 2022 should be interpreted with caution. Both testing and iPHIS data entry practices were likely impacted by the COVID-19 pandemic response.
- These data only represent confirmed cases of tuberculosis (TB) disease and TB infection (TBI) reported to public health and recorded in iPHIS. As a result, all case counts are subject to varying degrees of underreporting due to a variety of factors, such as disease awareness and medical care seeking behaviours that may depend on severity of illness, clinical practices, and changes in laboratory testing and reporting behaviours.
- This report includes data up to the end of the quarter that finished three months prior to data extraction because TB disease and TBI counts and corresponding data can take several months to stabilize.
- Only TB disease and TBI cases meeting the confirmed case classification as listed in the [Ontario MOH surveillance case definitions](#)¹ are included in the reported case counts.
 - Changes to provincial surveillance case definitions and disease classifications have occurred over the years and thus may impact the analysis and interpretation of trends over time. Cases are classified in iPHIS based on the Ontario MOH surveillance case definitions in use at the time the case was identified.
- TB disease cases are reported based on the Diagnosis Date. TBIs are reported based on the Episode Date, which is an estimate of the onset date of disease for a case. In order to determine this date, the following hierarchy exists in iPHIS: Onset Date > Specimen Collection Date > Lab Test Date > Reported Date.
 - For example: If an Onset Date exists, it will be used as the Episode Date. If Onset Date is not available, then the next available date in the hierarchy (i.e., Specimen Collection Date) will be used, and so on.
- Case counts by geography are based on the diagnosing health unit (DHU). DHU refers to the case's public health unit of residence at the time of illness onset or report to public health and not necessarily the location of exposure.

- The public health units that make up each geographic region can be found in [Appendix A](#).
- Cases for which the Disposition Status was reported as ENTERED IN ERROR, DOES NOT MEET DEFINITION, DUPLICATE-DO NOT USE, or any variation on these values, were excluded from this analysis.
 - TBI episodes generally do not have a diagnosis status reported in iPHIS, however, those with a diagnosis status entered as 'Does Not Meet Definition' were also excluded from analyses.
- The potential for duplicates exists because duplicate sets were not identified and excluded unless they were already resolved at either the local or provincial level prior to data extraction from iPHIS.

References

1. Ontario. Ministry of Health. Ontario public health standards: requirements for programs, services and accountability. Infectious disease protocol. Appendix 1: case definitions and disease-specific information. Disease: Tuberculosis. Effective: May 2022 [Internet]. Toronto, ON: King's Printer for Ontario; 2022 [cited 2025 Apr 7]. Available from: <https://files.ontario.ca/moh-ohs-tuberculosis-en-2022.pdf>
2. Ontario Agency for Health Protection and Promotion (Public Health Ontario). Tuberculosis (TB) [Internet]. Toronto, ON: King's Printer for Ontario; 2024 [updated 2024 Dec 13; cited 2025 Apr 7]. Available from: <https://www.publichealthontario.ca/en/diseases-and-conditions/infectious-diseases/respiratory-diseases/tuberculosis>
3. Ontario Agency for Health Protection and Promotion (Public Health Ontario). Tuberculosis in Ontario: January 1, 2020 to December 31, 2024. Toronto, ON: King's Printer for Ontario; 2025 [cited 2026 Apr 9]. Available from: https://www.publichealthontario.ca/-/media/Documents/T/25/tuberculosis-ontario-epi-summary-apr-21.pdf?rev=c6fafb65f53742a7904311030e0e9fba&sc_lang=en&hash=F5D1F4F4B65283FC7A82DF323360197F
4. World Health Organization (WHO). Framework towards TB elimination in low-incidence countries [Internet]. Geneva: WHO; 2014 [cited 2025 Jan 15]. Available from: <https://www.who.int/publications/i/item/9789241507707>
5. Population Reporting. Population projections public health unit, 2023-2046 [data file]. Toronto, ON: Ontario. Ministry of Finance [producer]; Toronto, ON: Ontario. Ministry of Health, IntelliHealth Ontario [distributor]; [extracted 2025 Sep 12].

Appendix A: TB Disease Cases and Rates

Table A1: TB Disease Case Counts and Rates Per 100,000 Population by Public Health Unit, Region and Year: Ontario, 2021-2025

Public Health Unit	3-Letter Code	2021 n (rate)	2022 n (rate)	2023 n (rate)	2024 n (rate)	2025 n (rate)
Durham Region Health Department	DUR	15 (2.1)	25 (3.4)	30 (3.9)	39 (4.9)	26 (3.2)
Lakelands Public Health	HNP	3 (0.9)	3 (0.8)	3 (0.8)	5 (1.3)	5 (1.3)
Peel Public Health	PEL	157 (10.4)	175 (11.4)	198 (12.5)	182 (11.0)	168 (10.0)
Simcoe Muskoka District Health Unit	SMD	5 (0.8)	4 (0.6)	9 (1.4)	13 (1.9)	10 (1.4)
York Region Public Health	YRK	59 (4.8)	69 (5.6)	74 (5.9)	64 (5.0)	75 (5.8)
CENTRAL EAST	n/a	239 (5.4)	276 (6.1)	314 (6.8)	303 (6.3)	284 (5.8)
City of Hamilton Public Health Services	HAM	20 (3.4)	25 (4.1)	24 (3.9)	34 (5.4)	43 (6.7)
Grand Erie Public Health	GEH	3 (1.1)	3 (1.0)	4 (1.3)	4 (1.3)	3 (1.0)
Halton Region Public Health	HAL	24 (3.9)	17 (2.7)	25 (3.9)	18 (2.7)	27 (4.0)
Niagara Region Public Health	NIA	9 (1.8)	12 (2.4)	19 (3.6)	14 (2.6)	14 (2.5)
Region of Waterloo Public Health and Emergency Services	WAT	17 (2.8)	24 (3.8)	17 (2.5)	23 (3.2)	43 (5.8)
Wellington-Dufferin-Guelph Public Health	WDG	6 (1.9)	6 (1.8)	10 (3.0)	14 (4.1)	14 (4.0)
CENTRAL WEST	n/a	79 (2.7)	87 (2.9)	99 (3.2)	107 (3.3)	144 (4.4)
Ottawa Public Health	OTT	61 (5.7)	60 (5.5)	69 (6.2)	91 (7.9)	95 (8.1)
Eastern Ontario Health Unit	EOH	2 (0.9)	0 (0.0)	2 (0.9)	1 (0.4)	4 (1.7)
Renfrew County and District Health Unit	REN	0 (0.0)	1 (0.9)	0 (0.0)	1 (0.9)	1 (0.8)
South East Health Unit	SEH	8 (1.4)	3 (0.5)	6 (1.0)	14 (2.3)	7 (1.1)
EASTERN	n/a	71 (3.6)	64 (3.2)	77 (3.7)	107 (5.0)	107 (5.0)

Public Health Unit	3-Letter Code	2021 n (rate)	2022 n (rate)	2023 n (rate)	2024 n (rate)	2025 n (rate)
Algoma Public Health	ALG	1 (0.9)	2 (1.7)	1 (0.8)	2 (1.6)	2 (1.5)
North Bay Parry Sound District Health Unit	NPS	0 (0.0)	1 (0.7)	0 (0.0)	1 (0.7)	0 (0.0)
Northeastern Public Health	NEH	6 (5.0)	8 (6.6)	24 (19.5)	17 (13.5)	18 (14.2)
Public Health Sudbury & Districts	SUD	2 (1.0)	0 (0.0)	3 (1.4)	13 (5.8)	7 (3.1)
NORTH EAST	n/a	9 (1.5)	11 (1.9)	28 (4.6)	33 (5.3)	27 (4.3)
Northwestern Health Unit	NWR	1 (1.2)	8 (9.6)	8 (9.6)	7 (8.4)	8 (9.5)
Thunder Bay District Health Unit	THB	6 (3.8)	5 (3.1)	4 (2.5)	15 (9.1)	10 (6.0)
NORTH WEST	n/a	7 (2.9)	13 (5.3)	12 (4.9)	22 (8.8)	18 (7.2)
Chatham-Kent Public Health	CHK	0 (0.0)	0 (0.0)	1 (0.9)	0 (0.0)	0 (0.0)
Grey Bruce Health Unit	GBO	1 (0.6)	0 (0.0)	1 (0.5)	0 (0.0)	2 (1.0)
Huron Perth Public Health	HPH	1 (0.7)	0 (0.0)	0 (0.0)	3 (1.9)	1 (0.6)
Lambton Public Health	LAM	0 (0.0)	1 (0.7)	1 (0.7)	1 (0.7)	1 (0.7)
Middlesex-London Health Unit	MSL	20 (3.8)	23 (4.2)	9 (1.6)	33 (5.6)	22 (3.6)
Southwestern Public Health	OXE	3 (1.3)	2 (0.9)	4 (1.7)	0 (0.0)	0 (0.0)
Windsor-Essex County Health Unit	WEC	11 (2.5)	8 (1.8)	9 (1.9)	16 (3.2)	16 (3.2)
SOUTH WEST	n/a	36 (2.0)	34 (1.9)	25 (1.3)	53 (2.7)	42 (2.1)
Toronto Public Health	TOR	283 (9.7)	297 (9.9)	333 (10.7)	370 (11.5)	314 (9.6)
TORONTO	n/a	283 (9.7)	297 (9.9)	333 (10.7)	370 (11.5)	314 (9.6)
TOTAL	n/a	724 (4.9)	782 (5.2)	888 (5.7)	995 (6.2)	936 (5.7)

Data sources: Cases: iPHIS. [Database; extracted 6 Apr 2026]. Population denominators: Ministry of Finance.⁴

Appendix B: Reported TB Infections and Rates

Table B1: Reported TB Infections and Rate Per 100,000 Population by Public Health Unit, Region and Year: Ontario, 2021-2025

Public Health Unit	3-Letter Code	2021 n (rate)	2022 n (rate)	2023 n (rate)	2024 n (rate)	2025 n (rate)
Durham Region Health Department	DUR	191 (26.3)	331 (44.4)	372 (48.5)	570 (72.0)	539 (66.5)
Lakelands Public Health	HNP	55 (15.7)	103 (28.8)	233 (63.5)	349 (92.6)	343 (89.6)
Peel Public Health	PEL	625 (41.3)	768 (50.2)	800 (50.5)	1,481 (89.7)	1631 (97.4)
Simcoe Muskoka District Health Unit	SMD	40 (6.4)	45 (7.0)	57 (8.6)	65 (9.5)	93 (13.3)
York Region Public Health	YRK	191 (15.6)	258 (21.0)	283 (22.7)	287 (22.6)	250 (19.4)
CENTRAL EAST	n/a	1,102 (24.8)	1,505 (33.4)	1,745 (37.7)	2,752 (57.6)	2,856 (58.8)
City of Hamilton Public Health Services	HAM	247 (41.6)	320 (53.1)	410 (66.6)	390 (61.6)	332 (51.5)
Grand Erie Public Health	GEH	18 (6.4)	42 (14.6)	67 (22.6)	84 (27.4)	135 (43.2)
Halton Region Public Health	HAL	144 (23.2)	138 (21.9)	174 (27.1)	277 (42.1)	285 (42.5)
Niagara Region Public Health	NIA	171 (34.4)	217 (42.7)	322 (61.3)	477 (87.5)	458 (82.4)
Region of Waterloo Public Health and Emergency Services	WAT	264 (43.0)	384 (60.2)	565 (83.7)	641 (88.6)	695 (93.5)
Wellington-Dufferin-Guelph Public Health	WDG	85 (26.5)	127 (38.8)	258 (77.3)	226 (66.1)	245 (70.2)
CENTRAL WEST	n/a	929 (31.7)	1,228 (41.0)	1,796 (58.1)	2,095 (65.3)	2,150 (65.6)

Public Health Unit	3-Letter Code	2021 n (rate)	2022 n (rate)	2023 n (rate)	2024 n (rate)	2025 n (rate)
Ottawa Public Health	OTT	605 (57.0)	699 (64.5)	996 (89.4)	1,169 (101.6)	1,063 (90.4)
Eastern Ontario Health Unit	EOH	5 (2.3)	10 (4.5)	16 (7.0)	16 (6.8)	12 (5.0)
Renfrew County and District Health Unit	REN	11 (9.8)	10 (8.8)	25 (21.8)	31 (26.6)	41 (34.8)
South East Health Unit	SEH	112 (19.3)	327 (55.2)	444 (73.5)	341 (55.0)	439 (69.8)
EASTERN	n/a	733 (37.1)	1,046 (51.9)	1,481 (71.8)	1,557 (73.4)	1,555 (71.9)
Algoma Public Health	ALG	16 (13.6)	36 (30.0)	63 (50.8)	103 (80.1)	72 (55.4)
North Bay Parry Sound District Health Unit	NPS	36 (26.8)	55 (39.9)	83 (58.4)	70 (47.6)	103 (69.2)
Northeastern Public Health	NEH	31 (26.0)	45 (37.3)	87 (70.6)	138 (109.3)	84 (66.1)
Public Health Sudbury & Districts	SUD	75 (35.7)	83 (38.9)	148 (67.6)	228 (100.9)	296 (129.2)
NORTH EAST	n/a	158 (27.2)	219 (37.0)	381 (62.7)	539 (85.9)	555 (87.4)
Northwestern Health Unit	NWR	18 (21.6)	31 (37.3)	38 (45.7)	41 (49.0)	45 (53.6)
Thunder Bay District Health Unit	THB	33 (20.8)	62 (38.8)	64 (39.5)	136 (82.2)	83 (49.8)
NORTH WEST	n/a	51 (21.1)	93 (38.3)	102 (41.6)	177 (71.1)	128 (51.1)
Chatham-Kent Public Health	CHK	13 (12.0)	20 (18.3)	30 (27.0)	93 (82.2)	133 (116.2)
Grey Bruce Health Unit	GBO	4 (2.2)	21 (11.3)	13 (6.9)	25 (12.9)	35 (17.7)
Huron Perth Public Health	HPH	17 (11.4)	15 (9.9)	22 (14.3)	26 (16.6)	30 (18.8)
Lambton Public Health	LAM	25 (18.6)	35 (25.4)	42 (29.8)	49 (33.6)	40 (27.1)

Public Health Unit	3-Letter Code	2021 n (rate)	2022 n (rate)	2023 n (rate)	2024 n (rate)	2025 n (rate)
Middlesex-London Health Unit	MSL	309 (58.8)	376 (69.3)	365 (64.8)	320 (54.0)	328 (53.9)
Southwestern Public Health	OXE	28 (12.4)	26 (11.3)	41 (17.4)	52 (21.5)	44 (17.8)
Windsor-Essex County Health Unit	WEC	158 (35.9)	267 (59.0)	326 (69.7)	291 (59.1)	360 (71.9)
SOUTH WEST	n/a	554 (31.4)	760 (42.0)	839 (45.0)	856 (44.2)	970 (49.1)
Toronto Public Health	TOR	817 (28.0)	724 (24.3)	1,062 (34.1)	932 (28.9)	857 (26.3)
TORONTO	n/a	817 (28.0)	724 (24.3)	1,062 (34.1)	932 (28.9)	857 (26.3)
TOTAL	n/a	4,344 (29.3)	5,575 (36.8)	7,406 (47.4)	8,908 (55.2)	9,071 (55.3)

Data sources: TBIs: iPHIS. [Database; extracted 6 Apr 2026]. Population denominators: Ministry of Finance.⁴

Citation

Ontario Agency for Health Protection and Promotion (Public Health Ontario). Tuberculosis in Ontario: January 1, 2021 to December 31, 2025. Toronto, ON: King's Printer for Ontario; 2026.

Disclaimer

This document was developed by Public Health Ontario (PHO). PHO provides scientific and technical advice to Ontario's government, public health organizations and health care providers. PHO's work is guided by the current best available evidence at the time of publication. The application and use of this document is the responsibility of the user. PHO assumes no liability resulting from any such application or use. This document may be reproduced without permission for non-commercial purposes only and provided that appropriate credit is given to PHO. No changes and/or modifications may be made to this document without express written permission from PHO.

Public Health Ontario

Public Health Ontario is an agency of the Government of Ontario dedicated to protecting and promoting the health of all Ontarians and reducing inequities in health. Public Health Ontario links public health practitioners, front-line health workers and researchers to the best scientific intelligence and knowledge from around the world.

For more information about PHO, visit publichealthontario.ca.