

## Weekly Epidemiologic Summary

# COVID-19 in Ontario: Focus on October 25, 2020 to October 31, 2020

This report includes the most current information available from CCM and other case management systems (CCM plus) as of **November 3, 2020**.

Please visit the interactive [Ontario COVID-19 Data Tool](#) to explore recent COVID-19 data by public health unit, age group, sex, and trends over time.

A [daily summary](#) is available and provides an epidemiologic summary of recent COVID-19 activity in Ontario. This weekly report provides an epidemiologic summary of COVID-19 activity in Ontario over time.

## Highlights

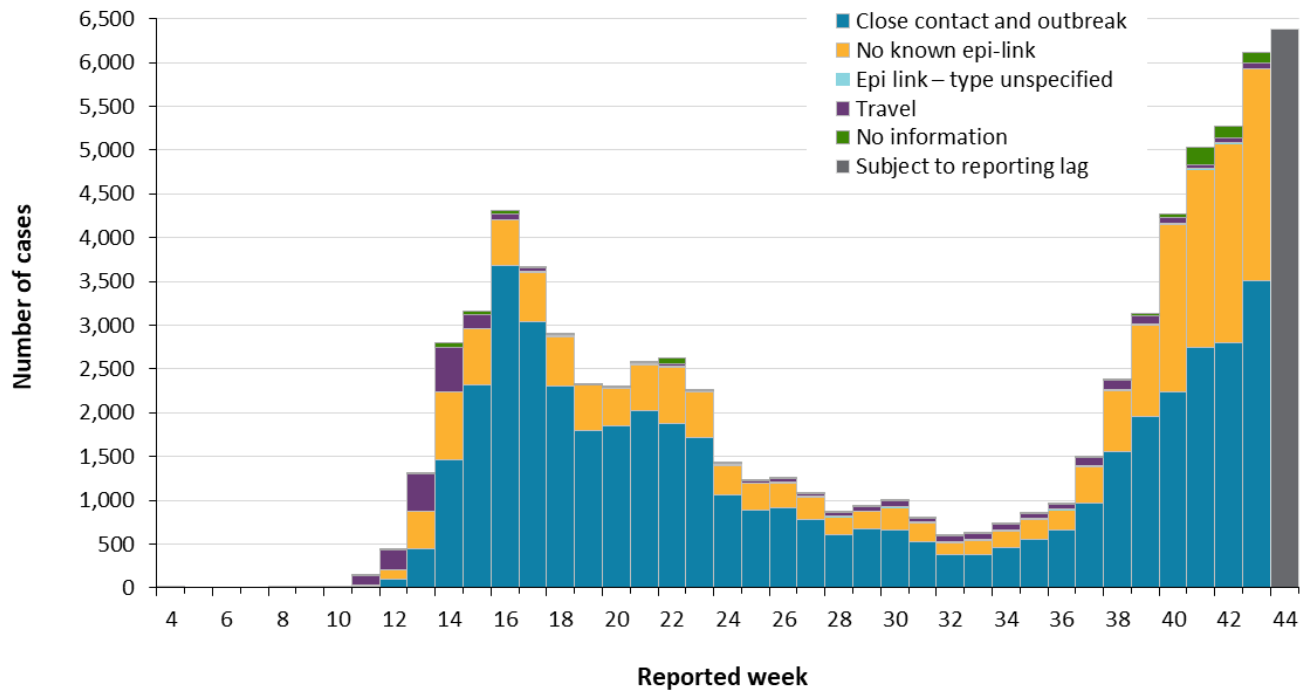
- There are a total of 77,303 confirmed cases of COVID-19 in Ontario with a public health unit reported date up to October 31, 2020.
- For the period with a public health unit reported date between October 25 and 31, 2020 (week 44):
  - A total of 6,384 cases were reported to public health compared to 6,109 cases the previous week (October 18 to 24).
  - For the first time since week 23 (May 31 to June 6), the rate of COVID-19 cases per 100,000 population reported amongst cases aged 80 and over (65.7) surpassed the rate of cases aged 20-39 (57.2) to become the age group reporting the greatest rate of disease in week 44.
  - In week 44, the most ethnically diverse neighbourhoods in Ontario had COVID-19 rates that were more than ten times higher than the least diverse neighbourhoods, and the neighbourhoods with the greatest neighbourhood deprivation had rates that were two times higher than neighbourhoods with the lowest neighbourhood deprivation.

The term public health unit reported date in this document refers to the date local public health units were first notified of the case.

Data corrections or updates can result in case records being removed and or updated from past reports. Thus comparisons of case counts by public health unit reported date may not align with daily change in cases publicly reported by the province for the same time period, which reflects the difference in cumulative counts between one day and the next.

## Cases Over Time

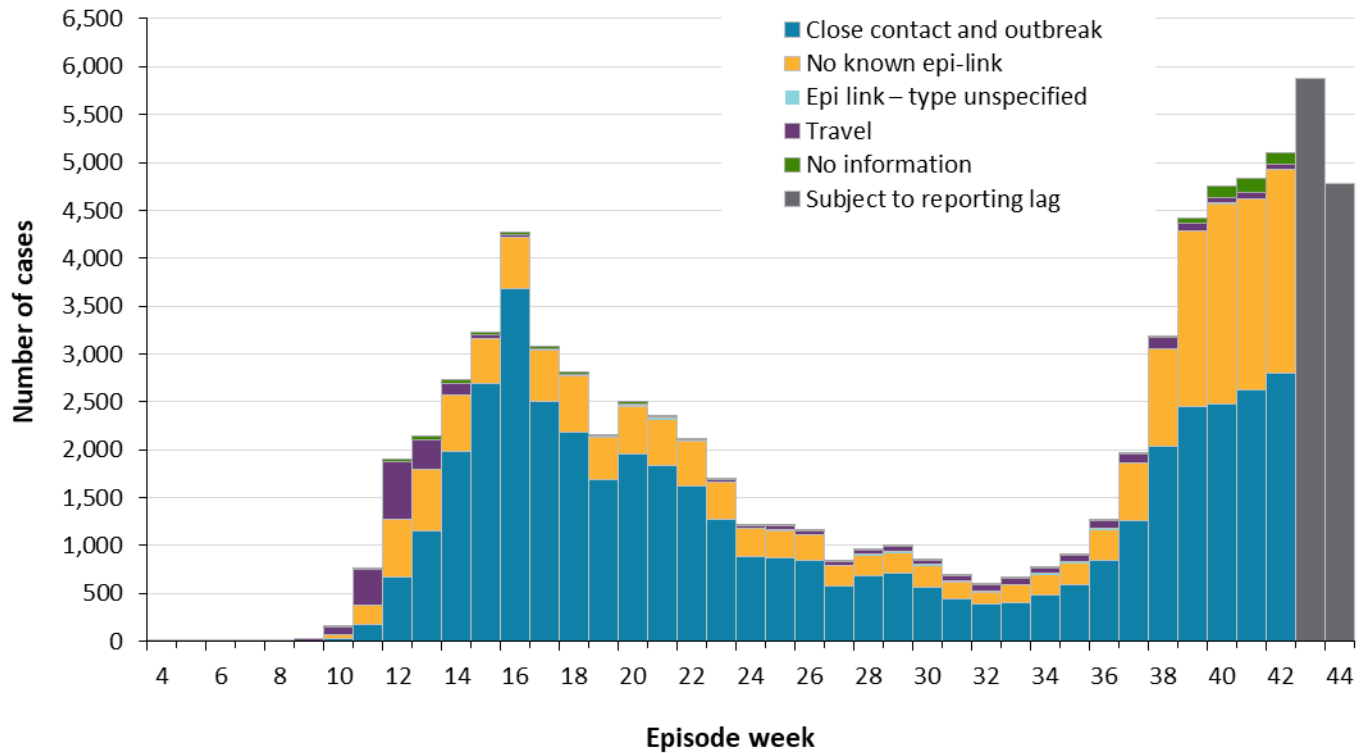
**Figure 1. Confirmed cases of COVID-19 by likely source of acquisition and public health unit reported week: Ontario**



**Note:** Include cases with reported dates ranging from week 4 (January 19 and 25, 2020) to week 44 (October 25 and 31, 2020). See [Table 1A](#) in Appendix A for a list of the weeks and corresponding start and end dates.

**Data Source:** CCM plus

**Figure 2. Confirmed cases of COVID-19 by likely source of acquisition and approximation of symptom onset week: Ontario**



**Note:** Not all cases have an episode date. Cases without an episode date are not included in the figure. The definition for how episode date is defined is available in the technical notes. Include cases with episode dates ranging from week 4 (January 19 and 25, 2020) to week 44 (October 25 and 31, 2020). See [Table 1A](#) in Appendix A for a list of the weeks and corresponding start and end dates.

**Data Source:** CCM plus.

## Case Characteristics

**Table 1. Summary of confirmed cases of COVID-19 by public health unit reported date: Ontario**

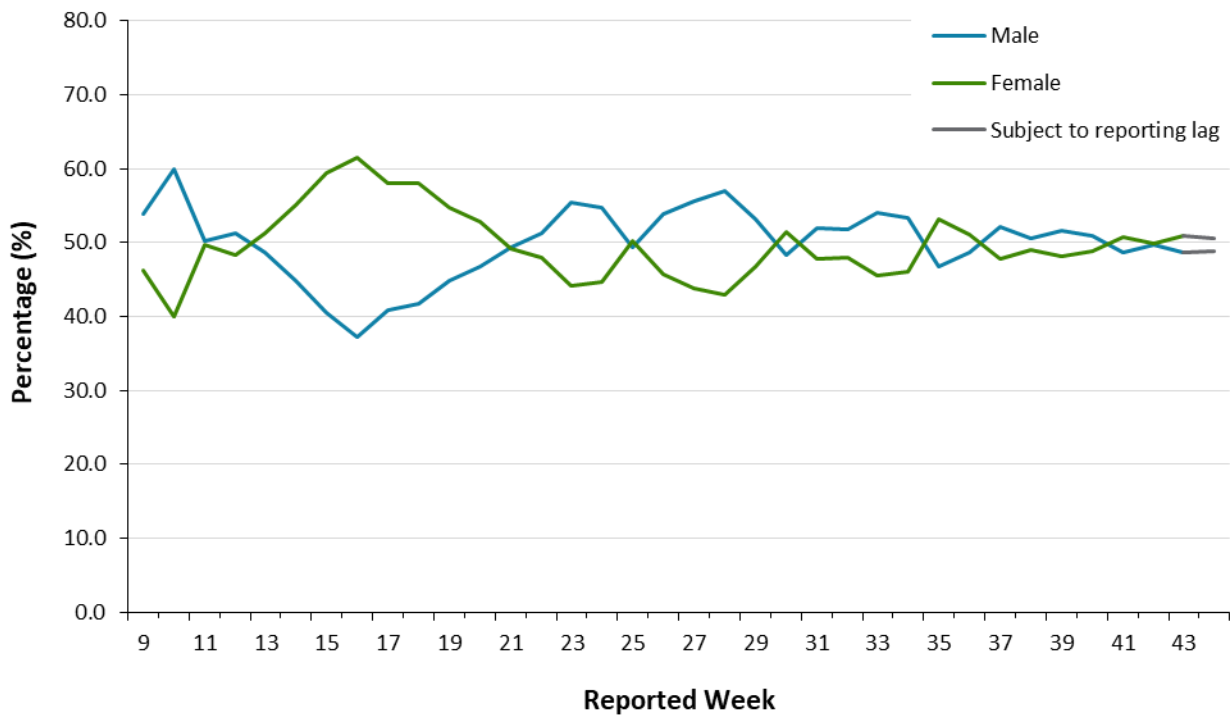
	Reported week 43 (October 18 to 24)	Reported week 44 (October 25 to 31)	Cumulative case count up to October 31	Cumulative rate per 100,000 population
Total number of cases	6,109	6,384	77,303	520.1
Gender: Male	2,978	3,114	37,199	508.2
Gender: Female	3,108	3,233	39,727	526.5
Ages: 19 and under	905	942	8,112	258.6
Ages: 20-39	2,320	2,379	27,995	673.6
Ages: 40-59	1,749	1,768	21,978	558.2
Ages: 60-79	802	848	11,575	391.7
Ages: 80 and over	331	446	7,634	1,123.9
Number resolved	N/A	N/A	68,106	N/A

**Note:** Not all cases have an age or gender reported.

Interpret information for the most recent week with caution due to reporting lags.

**Data Source:** CCM plus

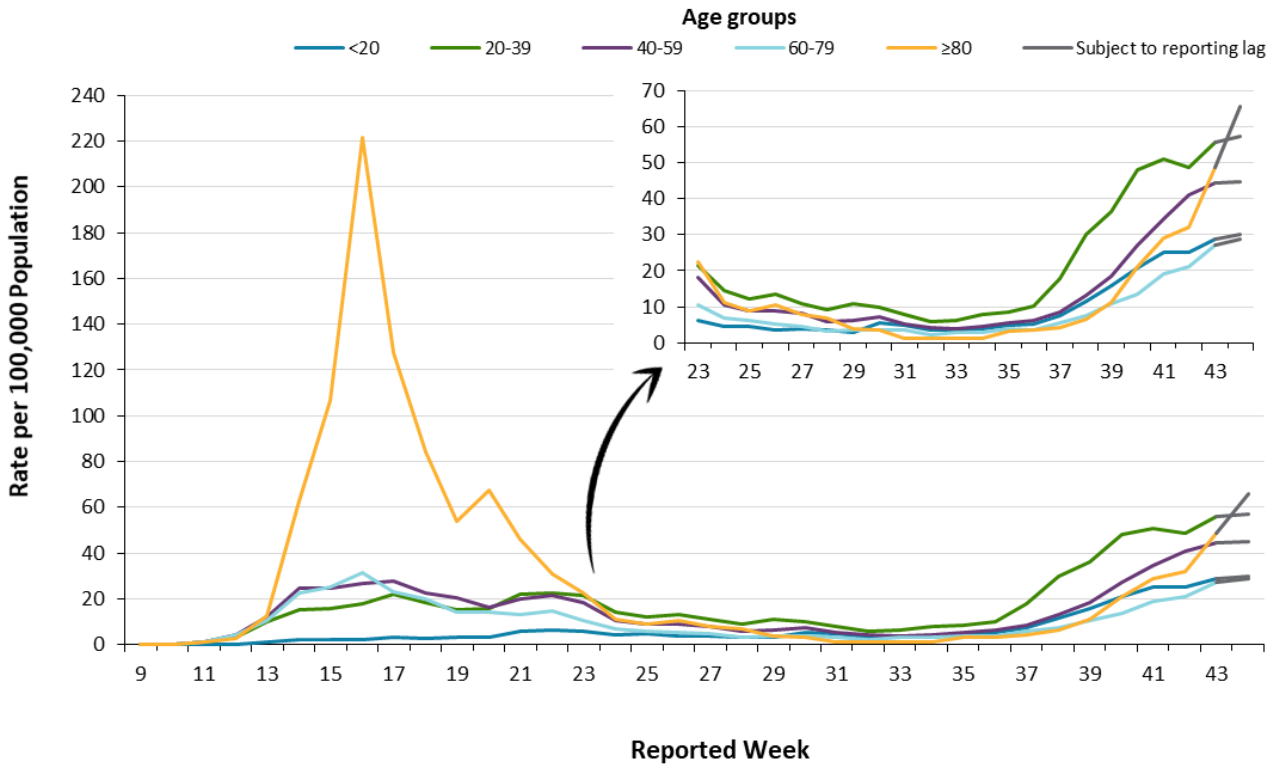
**Figure 3. Percentage of confirmed cases of COVID-19 by gender and public health unit reported week: Ontario**



**Note:** Not all cases have a gender reported. The denominator for calculating weekly percentages includes all cases. Only weeks with more than 10 cases by public health unit reporting date are included (starting in week 9). Include cases with reported dates ranging from Week 9 (February 23 and 29, 2020) to week 44 (October 25 and 31, 2020). See [Table 1A](#) in Appendix A for a list of the weeks and corresponding start and end dates.

**Data Source:** CCM plus

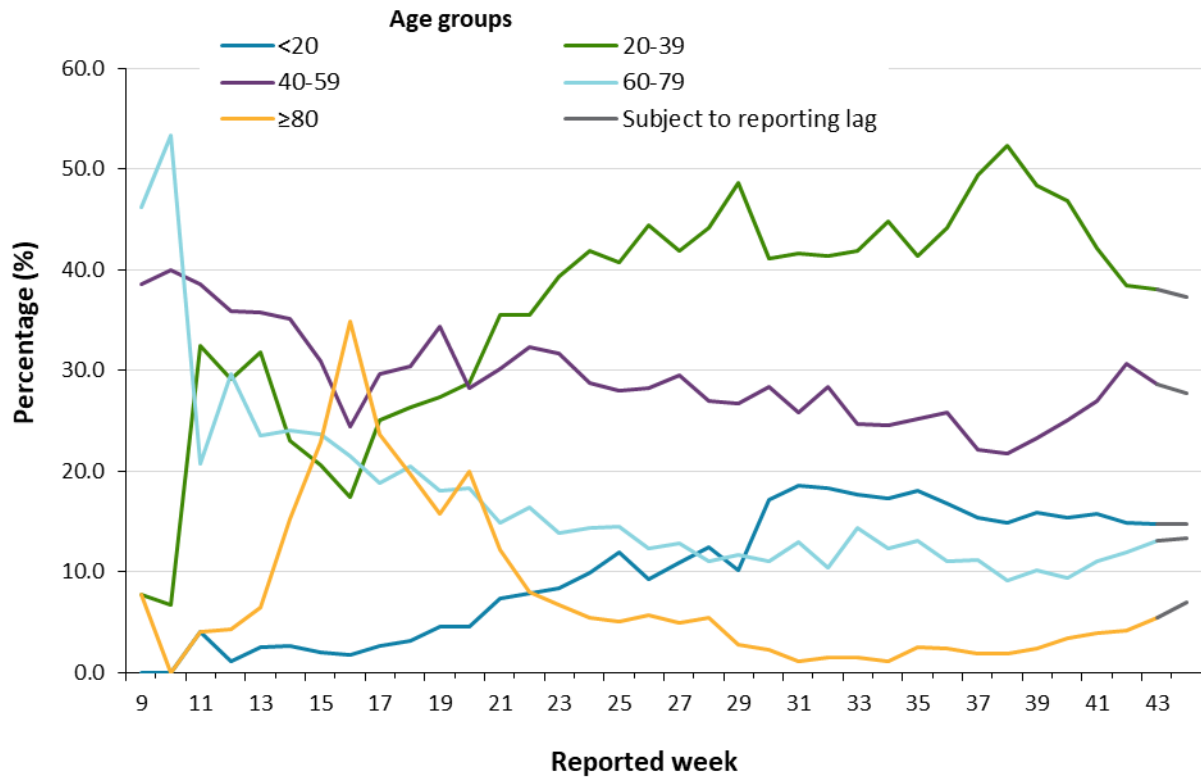
**Figure 4a. Rate of confirmed cases of COVID-19 per 100,000 population by age group and public health unit reported week: Ontario**



**Note:** Not all cases have an age reported. Only weeks with more than 10 cases by public health unit reporting date are included (starting in week 9). Include cases with reported dates ranging from week 9 (February 23 and 29, 2020) to week 44 (October 25 and 31, 2020). See [Table 1A](#) in Appendix A for a list of the weeks and corresponding start and end dates.

**Data Source:** CCM plus

**Figure 4b. Percentage of confirmed cases of COVID-19 by age group and public health unit reported week: Ontario**

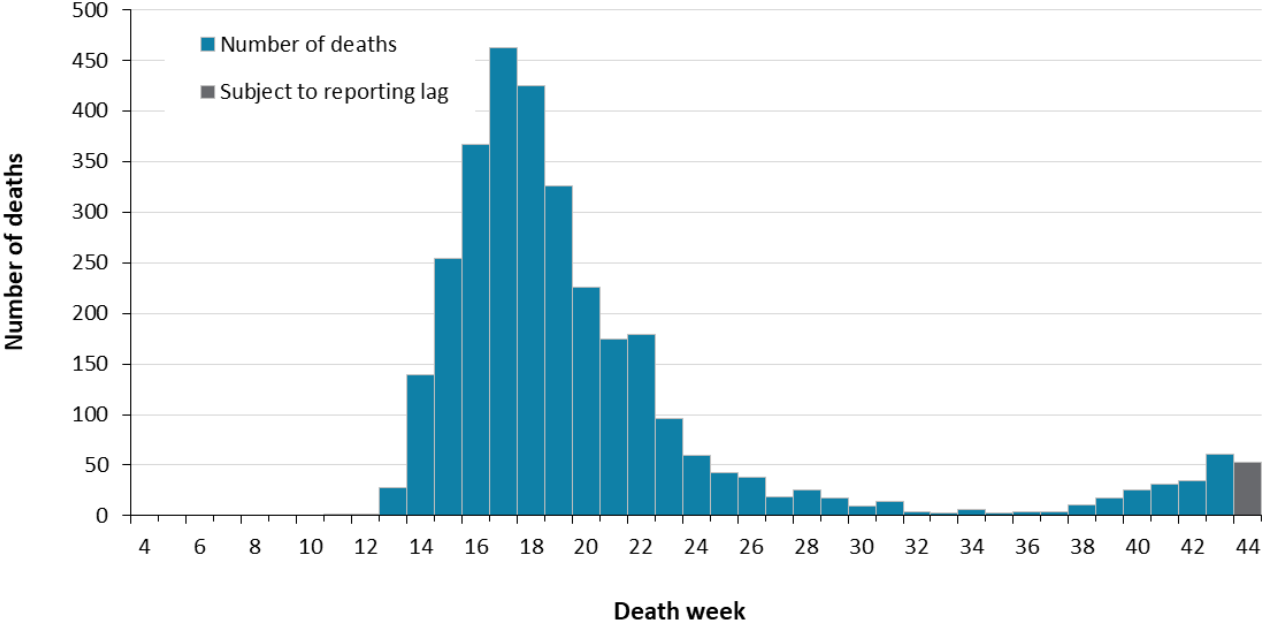


**Note:** Only weeks with more than 10 cases by public health unit reporting date are included (starting in week 9). Include cases with reported dates ranging from week 9 (February 23 and 29, 2020) to week 44 (October 25 and 31, 2020). See [Table 1A](#) in Appendix A for a list of the weeks and corresponding start and end dates.

**Data Source:** CCM plus

# Deaths

Figure 5. Deaths among confirmed cases of COVID-19 by week of death: Ontario



**Note:** Cases without a death date are not included in the figure. Include cases with date of death ranging from week 4 (January 19 and 25, 2020) to week 44 (October 25 and 31, 2020). See [Table 1A](#) in Appendix A for a list of the weeks and corresponding start and end dates.

**Data Source:** CCM plus

**Table 2. Summary of deaths among confirmed cases of COVID-19 by public health unit reported week: Ontario**

Deaths	Reported week 43 (October 18 to 24)	Reported week 44 (October 25 to 31)	Cumulative case count up to October 31	Cumulative rate per 100,000 population
Number of deaths	42	17	3,179	21.4
Gender: Male	16	4	1,459	19.9
Gender: Female	25	13	1,691	22.4
Ages: 19 and under	0	0	1	0.0
Ages: 20-39	0	0	11	0.3
Ages: 40-59	1	0	132	3.4
Ages: 60-79	11	2	852	28.8
Ages: 80 and over	30	15	2,183	321.4

**Note:** Age and gender may not be reported for all cases. Reported week is the week the case was reported to the public health unit. This is different than the “week of death” presented in Figure 5 which reflects the week the case was reported to have a ‘Fatal’ outcome.

Interpret information for the most recent week with caution due to reporting lags.

**Data Source:** CCM plus

## Exposure

**Table 3. Confirmed cases of COVID-19 by likely source of acquisition and public health unit reported week: Ontario**

	Reported week 43 (October 18 to 24)	Percentage	Reported week 44 (October 25 to 31)	Percentage	Cumulative case count up to October 31	Cumulative percentage
Travel	69	1.1%	66	1.0%	2,919	3.8%
Outbreak-associated or close contact of a confirmed case	3,506	57.4%	3,597	56.3%	50,569	65.4%
Epidemiological link – type unspecified	4	0.1%	1	0.0%	231	0.3%
No known epidemiological link	2,421	39.6%	2,270	35.6%	22,267	28.8%
Information missing or unknown	109	1.8%	450	7.0%	1,317	1.7%
<b>Total</b>	<b>6,109</b>		<b>6,384</b>		<b>77,303</b>	

**Note:** Information for how cases are grouped within each category is available in the technical notes. Interpret information for the most recent week with caution due to reporting lags.

**Data Source:** CCM plus.

## Sub-populations of interest

**Table 4. Summary of cases of COVID-19 among health care workers: Ontario**

Health care workers	Reported week 43 (October 18 to 24)	Reported week 44 (October 25 to 31)	Cumulative case count up to October 31
Number of cases	268	277	8,083
Ever hospitalized	5	2	254
Ever in ICU	0	0	59

**Note:** Interpret information for the most recent week with caution due to reporting lags.

**Data Source:** CCM plus

**Table 5. Summary of cases of COVID-19 associated with long-term care home outbreaks: Ontario**

Long-term care home associated cases	Reported week 43 (October 18 to 24)	Reported week 44 (October 25 to 31)	Cumulative case count up to October 31
Residents	236	298	6,979
Deaths among residents	23	8	2,033
Health care workers	66	65	2,914
Deaths among health care workers	0	0	8

**Note:** Information on how long-term care home residents and health care workers are identified is available in the technical notes. Interpret information for the most recent week with caution due to reporting lags.

**Data Source:** CCM plus

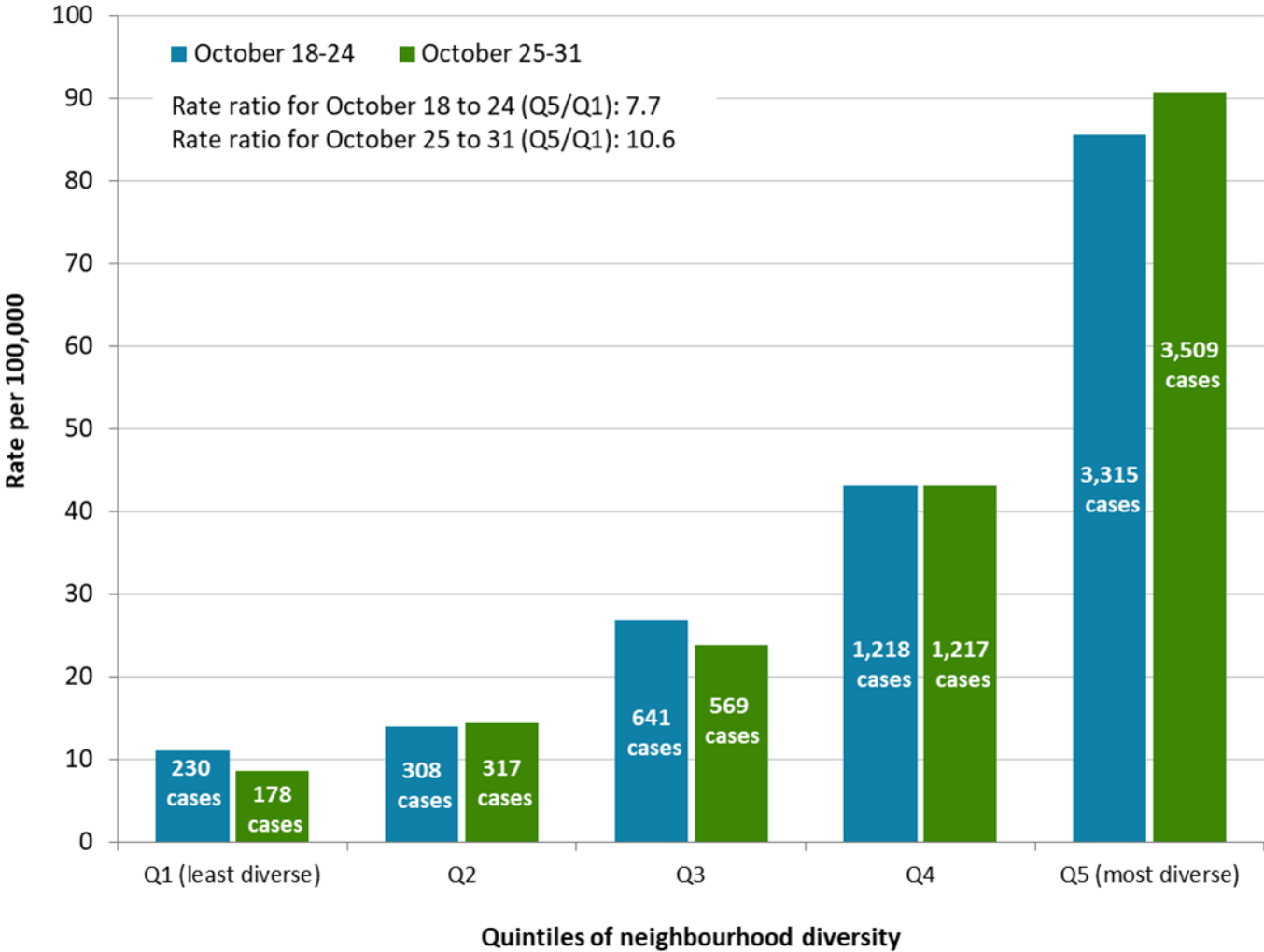
**Table 6: Summary of cases of COVID-19 among school aged children by age group: Ontario**

	<b>Reported week 43 (October 18 to 24)</b>	<b>Reported week 44 (October 25 to 31)</b>	<b>Cumulative case count from August 30 up to October 31</b>
Ages: 4-8	162	188	955
Ages: 9-13	224	246	1,227
Ages: 14-17	275	227	1,294

**Note:** Interpret information for the most recent week with caution due to reporting lags. Includes all confirmed cases of COVID-19 for specified ages, regardless of school attendance. Cumulative counts include cases of COVID-19 reported starting week 36 (August 30 to September 5, 2020).

**Data Source:** CCM plus

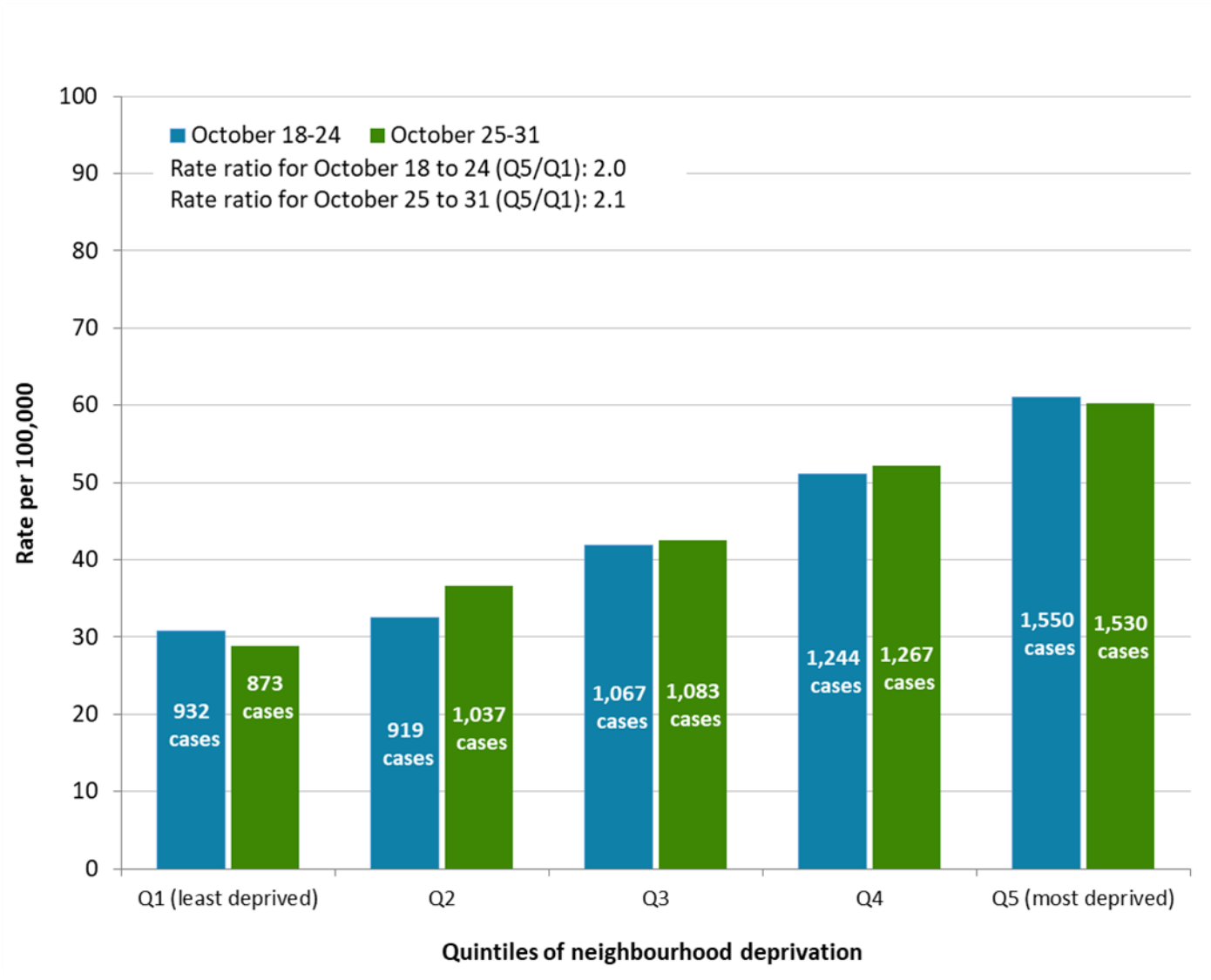
**Figure 6. Rate and number of confirmed cases of COVID-19 for each quintile of neighbourhood diversity: Ontario, week 43 (October 18 to 24, 2020) and week 44 (October 25 to 31, 2020).**



**Note:** Neighbourhood diversity is measured using the ethnic concentration dimension of the Ontario Marginalization Index. The ethnic concentration dimension is based on the proportion of non-white and non-Indigenous residents and/or the proportion of immigrants that arrived in Canada within the past five years.

**Data Source:** CCM plus, Ontario Marginalization Index

**Figure 7. Rate and number of confirmed cases of COVID-19 for each quintile of neighbourhood deprivation: Ontario, week 43 (October 18 to 24, 2020) and week 44 (October 25 to 31, 2020).**

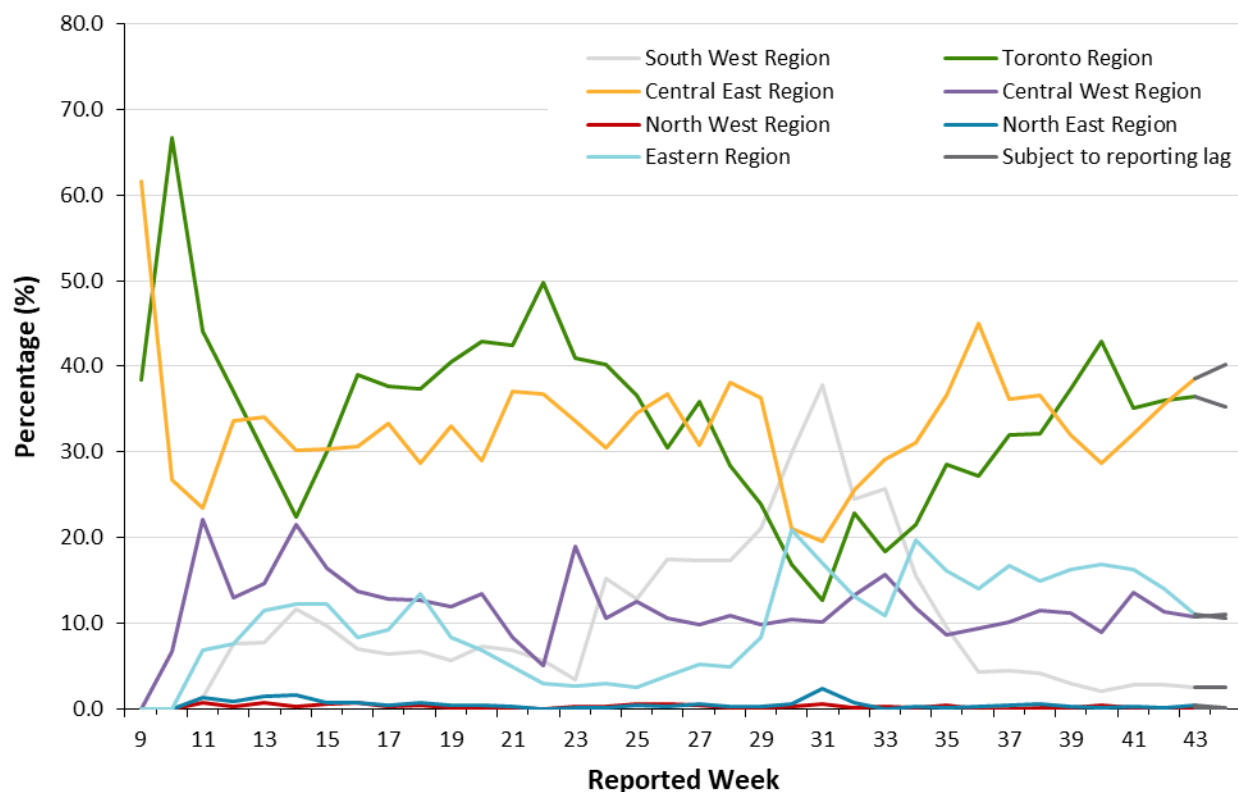


**Note:** Neighbourhood deprivation is measured using the material deprivation dimension of the Ontario Marginalization Index. The material deprivation dimension uses Canadian census data on income, quality of housing, educational attainment and family structure characteristics to assess the ability of individuals and communities to access and attain basic material needs.

**Data Source:** CCM plus, Ontario Marginalization Index

## Geography

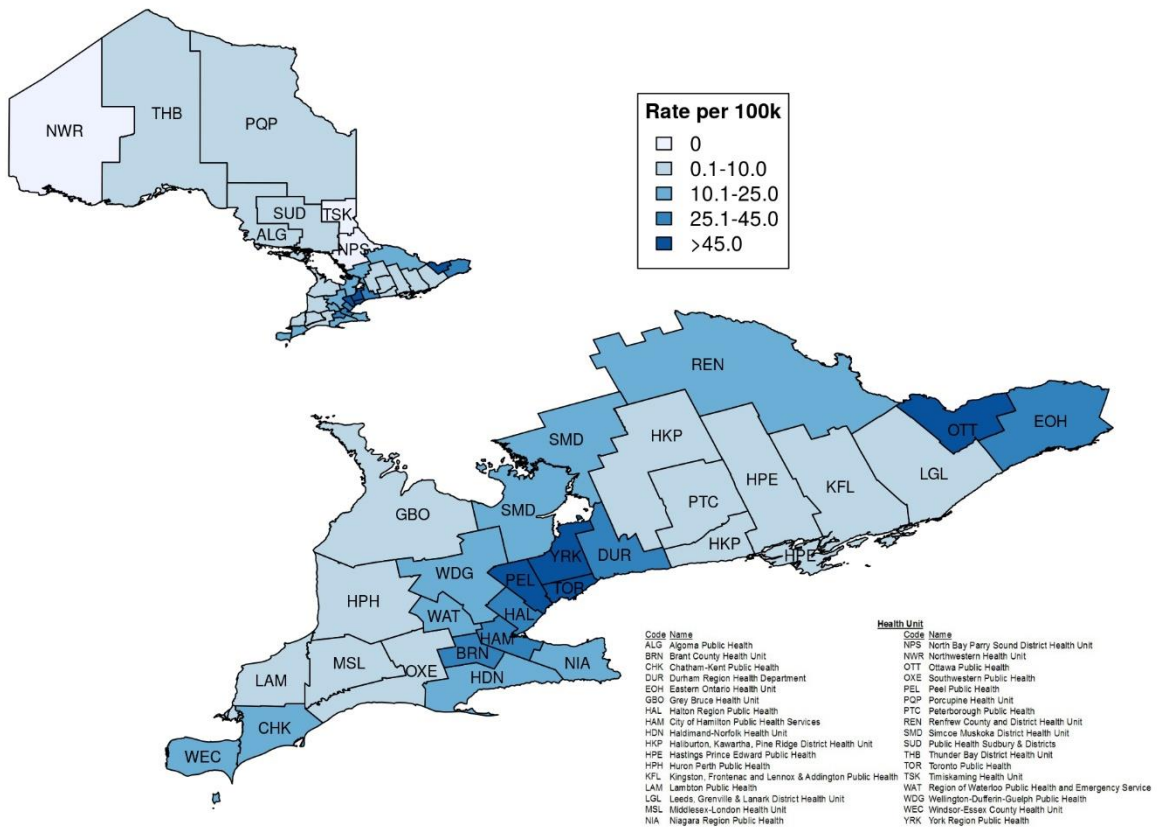
**Figure 8. Percentage of COVID-19 cases by geographic region and public health unit reported week: Ontario**



**Note:** Only weeks with more than 10 cases by public health unit reporting date are included (starting in week 9). Include cases with reported dates ranging from week 9 (February 23 and 29, 2020) to week 44 (October 25 and 31, 2020). Table 2A in [Appendix A](#) has a listing of public health units by region.

**Data Source:** CCM plus

**Figure 9. Rate of confirmed cases of COVID-19 in public health reported week 44 (October 25 to 31, 2020) by public health unit: Ontario**



**Note:** The provincial rate of confirmed cases of COVID-19 reported in week 44 was 42.9 cases per 100,000 population.

**Data Source:** CCM plus

## Outbreaks

**Table 7. Number of public health unit declared COVID-19 outbreaks by setting type: Ontario**

Setting Type	Reported week 44 (October 25 to 31)	Number of ongoing outbreaks	Cumulative number of outbreaks reported to October 31
Institution: Long-term care homes	13	76	581
Institution: Retirement homes	22	57	287
Institution: Hospitals	5	19	129
<b>Institutions Subtotal</b>	<b>40</b>	<b>152</b>	<b>997</b>
Congregate: Correctional facility	0	4	9
Congregate: Shelter	2	11	66
Congregate: Group home	4	32	161
<b>Congregate Setting Subtotal</b>	<b>6</b>	<b>47</b>	<b>236</b>
Non-congregate setting: Workplace - Farm	0	2	33
Non-congregate setting: Other Workplaces	29	130	451
Non-congregate setting: Childcare	17	43	146
Non-congregate setting: Elementary/Secondary School	22	49	120*
Non-congregate setting: Post-Secondary School	0	2	4*
Non-congregate setting: Other	16	67	178
<b>Non-Congregate Settings Subtotal</b>	<b>84</b>	<b>293</b>	<b>932</b>
<b>Total number of outbreaks</b>	<b>130</b>	<b>492</b>	<b>2,165</b>

**Note:** If public health unit outbreak reported date is unavailable, the date the public health unit created the outbreak is used. Ongoing outbreaks includes all outbreaks that are 'Open' in iPHIS without a 'Declared Over Date' recorded. Interpret information for the most recent week with caution due to reporting lags. 'Non-congregate setting: Workplace – Farm' include only farm workers or staff and does not include farm visitors. Non-congregate settings: Other Workplaces includes food processing facilities, and other workplace settings. Non-congregate setting: Other includes restaurants, community centres, etc. \*Cumulative counts include COVID-19 school

outbreaks reported starting week 36 (August 30 to September 5, 2020). Ongoing re-classification of settings for reported outbreaks can result in outbreak counts that may differ from previously reported counts.

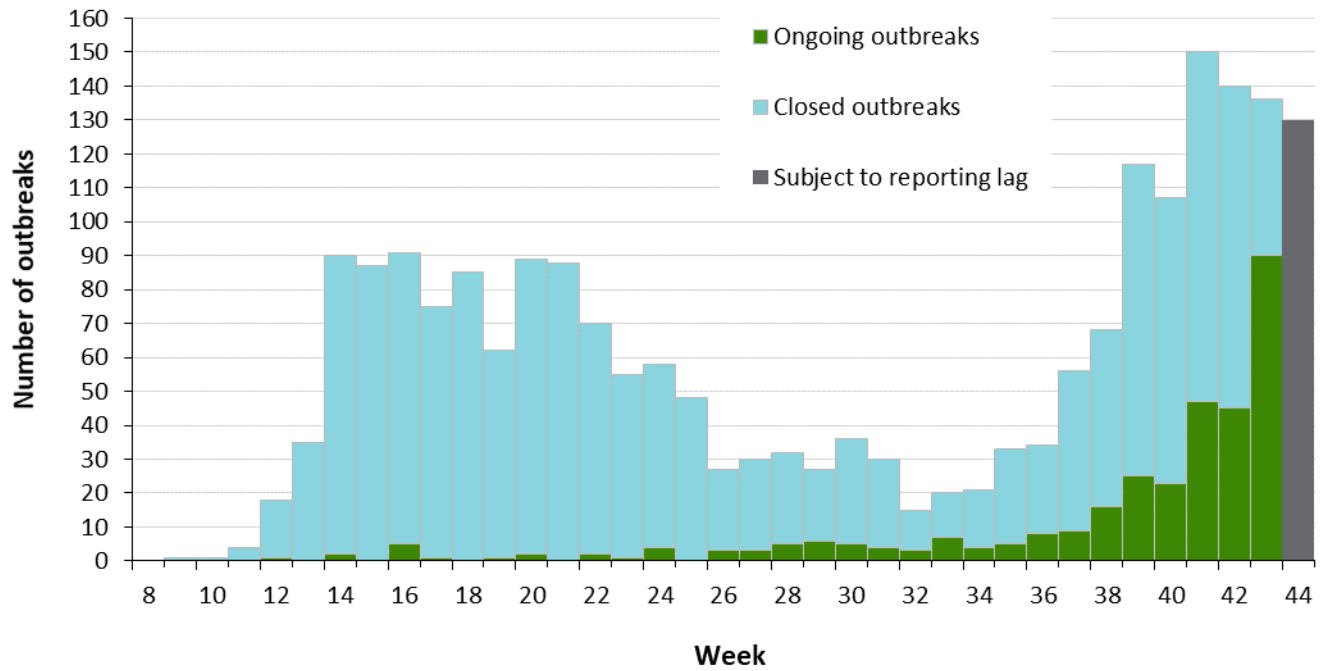
**Data Source:** CCM plus

**Table 8. Confirmed cases of COVID-19 associated with COVID-19 outbreaks by setting type and public health unit reported week: Ontario**

Cases associated with the outbreak setting type	Reported week 43 (October 18 to 24)	Reported week 44 (October 25 to 31)	Cumulative number of cases
Institution: Long-term care homes	343	411	10,662
Institution: Retirement homes	83	168	2,097
Institution: Hospitals	41	72	1,244
<b>Institutions Subtotal</b>	<b>467</b>	<b>651</b>	<b>14,003</b>
Congregate: Correctional facility	3	1	124
Congregate: Shelter	6	0	624
Congregate: Group home	67	27	791
<b>Congregate Setting Subtotal</b>	<b>76</b>	<b>28</b>	<b>1,539</b>
Non-congregate setting: Workplace - Farm	1	0	1,378
Non-congregate setting: Other Workplaces	65	57	1,714
Non-congregate setting: Childcare	11	22	184
Non-congregate setting: Elementary/Secondary School	40	67	328*
Non-congregate setting: Post-Secondary School	2	0	8*
Non-congregate setting: Other	83	52	826
<b>Non-Congregate Settings Subtotal</b>	<b>202</b>	<b>198</b>	<b>4,438</b>
<b>Total number of cases</b>	<b>745</b>	<b>877</b>	<b>19,980</b>

**Note:** Interpret case counts for the most recent week with caution due to reporting lags. 'Non-congregate setting: Workplace – Farm' include only farm workers or staff and does not include farm visitors. Non-congregate setting: Other Workplaces includes food processing facilities and other workplace settings. Non-congregate setting: Other includes restaurants, community centres, etc. \*Cumulative counts include cases of COVID-19 associated with school outbreaks reported starting week 36 (August 30 to September 5, 2020). Ongoing re-classification of settings for reported outbreaks can result in case counts that may differ from previously reported counts. **Data Source:** CCM plus

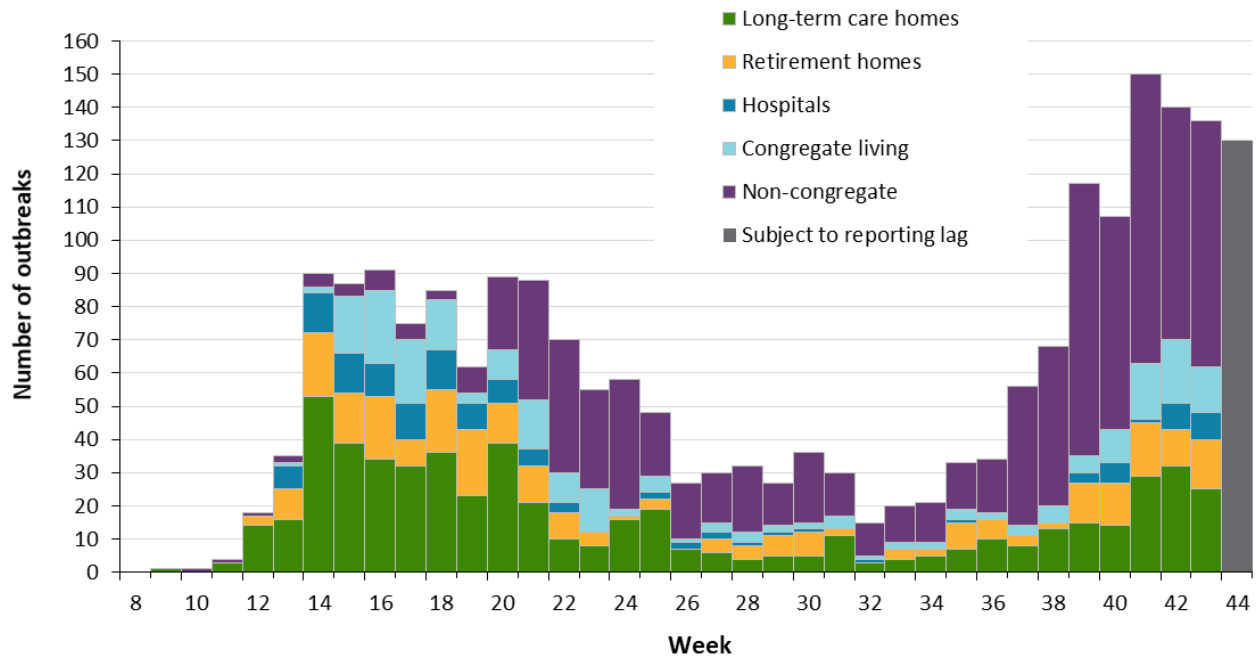
**Figure 10. Public health unit declared COVID-19 outbreaks by status (ongoing or closed) and public health unit outbreak reported week: Ontario**



**Note:** If public health unit outbreak reported date is unavailable, the date the public health unit created the outbreak is used. Ongoing outbreaks includes all outbreaks that are 'Open' in iPHIS without a 'Declared Over Date' recorded. Closed outbreaks are 'Closed' or have a 'Declared Over Date' recorded in iPHIS. Week 8 refers to February 16 and 22, 2020 and week 44 refers to October 25 and 31, 2020.

**Data Source:** CCM plus

**Figure 11. Public health unit declared COVID-19 outbreaks by outbreak setting type and public health unit reported week: Ontario**



**Note:** If public health unit outbreak reported date is unavailable, the date the public health unit created the outbreak is used. Week 8 refers to February 16 and 22, 2020 and week 44 refers to October 25 and 31, 2020. Congregate settings include group homes, shelters, correctional facilities, etc. Non-congregate settings include outbreaks within workplaces, childcare, schools, restaurants, etc.

**Data Source:** CCM plus

# Technical Notes

## Data Sources

- The data for this report were based on:
  - Information extracted from the Ontario Ministry of Health (Ministry) integrated Public Health Information System (iPHIS) database for Toronto Public Health as of **November 3, 2020 at 3 p.m.**
  - Information successfully uploaded to the Ministry from local systems: Toronto Public Health (Coronavirus Rapid Entry System) CORES, The Ottawa Public Health COVID-19 Ottawa Database (The COD) and Middlesex-London COVID-19 Case and Contact Management Tool (CCMtool) as of **November 3, 2020 at 2 p.m.**
  - Information successfully uploaded to the Ministry from the Public Health Case and Contact Management Solution (CCM) as of **November 3, 2020 at 1 p.m.**
- CCM plus (which includes CCM, iPHIS, CORES, The COD and COVID-19 CCMtool) are dynamic disease reporting systems, which allow ongoing updates to data previously entered. As a result, data extracted from CCM and the local systems represent a snapshot at the time of extraction and may differ from previous or subsequent reports.
- Ontario population projection data for 2020 were sourced from Ministry, IntelliHEALTH Ontario. Data were extracted on November 26, 2019.
- Postal Code Conversion File Plus (PCCF+) version 7B from Statistics Canada 2016 Canadian census dissemination area profiles.
- The health equity (neighbourhood-level diversity and deprivation) analyses use data from the 2016 Ontario Marginalization Index and population counts from the 2016 Canada Census:
  - Matheson FI; van Ingen T. 2016 Ontario marginalization index. Toronto, ON: Providence St. Joseph's and St. Michael's Healthcare; 2018. Joint publication with Public Health Ontario.
  - Statistics Canada. Census of Population, 2016: Profile for Canada, Provinces, Territories, Census Divisions, Census Subdivisions and Dissemination Areas. Retrieved from: [https://www12.statcan.gc.ca/census-recensement/2016/dp-pd/prof/details/download-telecharger/comp/GetFile.cfm?Lang=E&FILETYPE=CSV&GEONO=044\\_ONTARIO](https://www12.statcan.gc.ca/census-recensement/2016/dp-pd/prof/details/download-telecharger/comp/GetFile.cfm?Lang=E&FILETYPE=CSV&GEONO=044_ONTARIO).

## Data Caveats and Methods: Case Data

- The data only represent cases reported to public health units and recorded in CCM plus. As a result, all counts are subject to varying degrees of underreporting due to a variety of factors, such as disease awareness and medical care seeking behaviours, which may depend on severity of illness, clinical practice, changes in laboratory testing, and reporting behaviours.

- Observed trends over time should be interpreted with caution for the most recent period due to reporting and/or data entry lags.
- All cases meeting the confirmed case classification as listed in the MOH [COVID-19 case definition](#) are included except where noted (e.g., analyses that describe the relationship between COVID-19 and marginalization). This includes persons with a positive detection of serum/plasma immunoglobulin G (IgG) antibodies to SARS-CoV-2, which was added to the confirmed case definition on **August 6, 2020**.
- CCM/iPHIS cases for which the Disposition Status was reported as ENTERED IN ERROR, DOES NOT MEET DEFINITION, DOES NOT MEET, IGNORE, DUPLICATE-DO NOT USE, or any variation on these values have been excluded. The provincial case count for COVID-19 includes cases that are counted once across all systems from which the case data are obtained. Duplicate records may exist if these records were not identified and resolved prior to data upload to the Ministry.
- Reported date is the date the case was reported to the public health unit. This is different than the daily change in cases released by the Province for the same time period, which reflects the difference in cumulative counts reported to the Province between one day and the next.
- Reported weeks were created to align with the Public Health Agency of Canada (PHAC) influenza surveillance weeks.
- Case episode date is based on an estimate of the best date of disease onset. This date is calculated based on either the date of symptom onset, specimen collection/test date, or the date reported to the public health unit.
- Cases with unknown or missing ages were excluded from age-specific analyses.
- Health care worker includes cases that reported 'Yes' to any of the following occupations: health care worker, doctor, nurse, dentist, dental hygienist, midwife, other medical technicians, personal support worker, respiratory therapist, first responder.
- Resolved cases are determined only for COVID-19 cases that have not died. Cases that have died are considered fatal and not resolved. The following cases are considered resolved:
  - Cases that are reported as 'recovered' in CCM based on local public health unit assessment
  - Cases that are not hospitalized and are 14 days past their symptom onset date or specimen collection date (where symptom onset date is not known)
  - Cases that are currently hospitalized (no hospitalization end date entered) and have a case status of 'closed' indicating that public health follow up is complete and are 14 days past their symptom onset date or specimen collection date
- Data on hospital admissions, ICU admissions and deaths are likely under-reported as these events may occur after the completion of public health follow up of cases. Cases that were admitted to hospital or died after follow-up was completed may not be captured in CCM.

- Deaths are determined by using the outcome field in CCM plus. Any case marked 'Fatal' is included in the deaths data. The CCM field Type of Death is not used to further categorize the data.
  - The date of death is determined using the outcome date field for cases marked as 'Fatal' in the outcome field.
- Hospitalization includes all cases for which a hospital admission date was reported at the time of data extraction. It includes cases that have been discharged from hospital as well as cases that are currently hospitalized. Emergency room visits are not included in the number of reported hospitalizations.
- ICU admission includes all cases for which an ICU admission date was reported at the time of data extraction. It is a subset of the count of hospitalized cases. It includes cases that have been treated or that are currently being treated in an ICU.
- Likely source of acquisition is determined by examining the epidemiologic link and epidemiologic link status fields in CCM and local systems. If no epidemiologic link is identified in those fields the risk factor fields are examined to determine whether a case travelled, was associated with an outbreak, was a contact of a case, had an Epidemiological link with type unspecified, had no known epidemiological link (sporadic community transmission) or was reported to have an unknown source/no information was reported. Some cases may have no information reported if the case is untraceable, was lost to follow-up or referred to FNIHB. Cases with multiple risk factors were assigned to a single likely acquisition source group which was determined hierarchically in the following order:
  - For cases with an episode date *on or after* April 1, 2020: Outbreak-associated > close contact of a confirmed case > travel > no known epidemiological link > information missing or unknown
  - For cases with an episode date *before* April 1, 2020: Travel > outbreak-associated > close contact of a confirmed case > no known epidemiological link > information missing or unknown
- 'Long-term care home residents' includes cases that reported 'Yes' to the risk factor 'Resident of a long-term care home'; or 'Yes' to the risk factor 'Resident of nursing home or other chronic care facility' and reported to be part of an outbreak assigned as a long-term care home (via the Outbreak number or case comments field); or were reported to be part of an outbreak assigned as a long-term care home (via the outbreak number or case comments field) with an age over 70 years and did not report 'No' to the risk factors 'Resident of long-term care home' or 'Resident of nursing home or other chronic care facility'. 'Long-term care home residents' excludes cases that reported 'Yes' to any of the health care worker occupational risk factors.
- 'Health care workers associated with long-term care outbreaks' includes 'health care workers' reported to be part of an outbreak assigned as a long-term care home (via the outbreak number or case comments field). Excludes cases that reported 'Yes' to risk factors 'Resident of long-term care home' or 'Resident of nursing home or other chronic care facility' and 'Yes' to the calculated 'health care workers' variable.

- ‘Cases associated with school outbreaks’ includes cases that are linked to an outbreak, by school classification type (Elementary, Elementary/Secondary, Secondary, Post-Secondary), that met the definition of a [school outbreak](#).
- School classification types are defined by the Ministry of Education.
  - Elementary/Secondary schools include public or private schools educating children in a combination of elementary and secondary grades (e.g., Kindergarten to Grade 8, Grades 9 to 12, and Kindergarten to Grade 12).
- Orientation of case counts by geography is based on the diagnosing health unit (DHU). DHU refers to the case's public health unit of residence at the time of illness onset and not necessarily the location of exposure. Cases for which the DHU was reported as MOH (to signify a case that is not a resident of Ontario) have been excluded from the analyses.
  - GTA health units include: Durham Region Health Department, Peel Public Health, Toronto Public Health and York Region Public Health
- Ongoing outbreaks are those that are reported in iPHIS as ‘Open’ and without a ‘Declared Over Date’ recorded.
- Outbreaks are declared by the local medical officer of health or their designate in accordance to the Health Protection and Promotion Act and criteria outlined in [Ministry guidance documents](#).
- School outbreaks include outbreaks declared on or after week 36 (August 30 to September 5, 2020).

## Data Caveats and Methods: ON-Marg

- ON-Marg is a data tool that combines a wide range of demographic indicators into multiple distinct dimensions of marginalization. It is an area-based index which assigns a measure of marginalization based on neighbourhood versus individual characteristics. As such, the broader demographic trends of an area may not reflect all residents of a neighbourhood owing to the inherent heterogeneity of demographic characteristics which can vary substantially especially across large rural geographies. For more information, please visit [PHO's ON-Marg website](#).
- Neighbourhood diversity is defined using the ethnic concentration dimension of ON-Marg, which measures populations who may experience marginalization related to racism and discrimination. It is based on the proportion of non-white and non-Indigenous residents (visible minority) and/or the proportion of immigrants that arrived in Canada within the past five years. ‘Visible minority’ is a term used by Statistics Canada that, although is considered to be outdated, is used here to be consistent with the Canadian census.
- Neighbourhood deprivation is defined using the material deprivation dimension of ON-Marg, which is closely connected to poverty. It refers to the inability of individuals and communities to access and attain basic material needs. The indicators included in this dimension measure income, quality of housing, educational attainment and family structure characteristics.

- “Neighbourhoods” are considered to be Statistic Canada dissemination areas (DA). The Postal Code Conversion File Plus (PCCF+) version 7B was used to match individuals to a DA based on their postal code, which were subsequently assigned to a quintile of marginalization that contained 20% of Ontario neighbourhoods. The quintiles for the ethnic concentration and the material deprivation dimensions are ordered from quintiles 1 to 5, with quintile 1 having the lowest level of marginalization (i.e., least diverse or least deprived) and quintile 5 having the highest level of marginalization (i.e., most diverse or most deprived).
- The following were not included in analyses that summarize the impact of COVID-19 among Ontarians who may experience marginalization:
  - People who have tested positive for COVID-19 that reside in long-term care settings are not included in the census data from which the marginalization indicators (ethnic concentration and material deprivation) are derived. Although these cases represent a large number of cases overall and deaths, their exclusion ensures appropriate comparisons since long-term care residents are excluded from ON-Marg.
  - People who have tested positive for COVID-19 that reside in census dissemination areas where data has been suppressed, and cases that have missing or invalid postal codes could not be assigned to a quintile of marginalization.
  - Due to data suppression for some census indicators on Indian Reserves in Ontario, residents of Indian Reserves could not be included in ON-Marg and therefore people who have tested positive for COVID-19 and are living on Indian Reserves could not be assigned to a quintile of marginalization. While Indigenous individuals living off reserves are included in this analysis, Indigeneity data is not currently collected or captured in dimensions of ON-Marg.

## Appendix A

**Table 1A. Confirmed cases of COVID-19 by public health unit reported week: Ontario**

Reported Week	Start date	End date	Number of cases	Cumulative count
2	January 5, 2020	January 11, 2020	0	0
3	January 12, 2020	January 18, 2020	0	0
4	January 19, 2020	January 25, 2020	3	3
5	January 26, 2020	February 1, 2020	0	3
6	February 2, 2020	February 8, 2020	0	3
7	February 9, 2020	February 15, 2020	0	3
8	February 16, 2020	February 22, 2020	1	4
9	February 23, 2020	February 29, 2020	13	17
10	March 1, 2020	March 7, 2020	15	32
11	March 8, 2020	March 14, 2020	145	177
12	March 15, 2020	March 21, 2020	446	623
13	March 22, 2020	March 28, 2020	1,322	1,945
14	March 29, 2020	April 4, 2020	2,796	4,741
15	April 5, 2020	April 11, 2020	3,166	7,907
16	April 12, 2020	April 18, 2020	4,309	12,216
17	April 19, 2020	April 25, 2020	3,665	15,881
18	April 26, 2020	May 2, 2020	2,903	18,784
19	May 3, 2020	May 9, 2020	2,334	21,118
20	May 10, 2020	May 16, 2020	2,295	23,413
21	May 17, 2020	May 23, 2020	2,578	25,991

Reported Week	Start date	End date	Number of cases	Cumulative count
22	May 24, 2020	May 30, 2020	2,623	28,614
23	May 31, 2020	June 6, 2020	2,268	30,882
24	June 7, 2020	June 13, 2020	1,431	32,313
25	June 14, 2020	June 20, 2020	1,232	33,545
26	June 21, 2020	June 27, 2020	1,254	34,799
27	June 28, 2020	July 4, 2020	1,082	35,881
28	July 5, 2020	July 11, 2020	865	36,746
29	July 12, 2020	July 18, 2020	928	37,674
30	July 19, 2020	July 25, 2020	999	38,673
31	July 26, 2020	August 1, 2020	800	39,473
32	August 2, 2020	August 8, 2020	596	40,069
33	August 9, 2020	August 15, 2020	615	40,684
34	August 16, 2020	August 22, 2020	724	41,408
35	August 23, 2020	August 29, 2020	857	42,265
36	August 30, 2020	September 5, 2020	966	43,231
37	September 6, 2020	September 12, 2020	1,501	44,732
38	September 13, 2020	September 19, 2020	2,384	47,116
39	September 20, 2020	September 26, 2020	3,130	50,246
40	September 27, 2020	October 3, 2020	4,264	54,510
41	October 4, 2020	October 10, 2020	5,026	59,536
42	October 11, 2020	October 17, 2020	5,274	64,810
43	October 18, 2020	October 24, 2020	6,109	70,919
44	October 25, 2020	October 31, 2020	6,384	77,303

**Table 2A. Confirmed cases of COVID-19 by public health unit and region: Ontario**

Public Health Unit Name	Cases reported week 43	Rate per 100,000 population Reported week 43	Cases reported week 44	Rate per 100,000 population Reported week 44
Northwestern Health Unit	4	4.6	0	0.0
Thunder Bay District Health Unit	6	4.0	2	1.3
<b>TOTAL NORTH WEST</b>	10	4.2	2	0.8
Algoma Public Health	2	1.7	3	2.6
North Bay Parry Sound District Health Unit	3	2.3	0	0.0
Porcupine Health Unit	5	6.0	4	4.8
Public Health Sudbury & Districts	12	6.0	5	2.5
Timiskaming Health Unit	0	0.0	0	0.0
<b>TOTAL NORTH EAST</b>	22	3.9	12	2.1
Ottawa Public Health	506	48.0	571	54.1
Eastern Ontario Health Unit	122	58.5	71	34.0
Hastings Prince Edward Public Health	9	5.3	4	2.4
Kingston, Frontenac and Lennox & Addington Public Health	7	3.3	5	2.4
Leeds, Grenville & Lanark District Health Unit	19	11.0	17	9.8
Renfrew County and District Health Unit	16	14.7	11	10.1

<b>Public Health Unit Name</b>	<b>Cases reported week 43</b>	<b>Rate per 100,000 population Reported week 43</b>	<b>Cases reported week 44</b>	<b>Rate per 100,000 population Reported week 44</b>
<b>TOTAL EASTERN</b>	679	35.2	679	35.2
Durham Region Health Department	256	35.9	202	28.4
Haliburton, Kawartha, Pine Ridge District Health Unit	4	2.1	4	2.1
Peel Public Health	1,292	80.5	1,514	94.3
Peterborough Public Health	5	3.4	9	6.1
Simcoe Muskoka District Health Unit	111	18.5	144	24.0
York Region Public Health	690	56.3	698	56.9
<b>TOTAL CENTRAL EAST</b>	2,358	52.6	2,571	57.4
Toronto Public Health	2,224	71.3	2,253	72.2
<b>TOTAL TORONTO</b>	2,224	71.3	2,253	72.2
Chatham-Kent Public Health	29	27.3	13	12.2
Grey Bruce Health Unit	10	5.9	8	4.7
Huron Perth Public Health	3	2.1	12	8.6
Lambton Public Health	6	4.6	3	2.3
Middlesex-London Health Unit	60	11.8	50	9.9
Southwestern Public Health	16	7.6	16	7.6
Windsor-Essex County Health Unit	33	7.8	59	13.9
<b>TOTAL SOUTH WEST</b>	157	9.3	161	9.5
Brant County Health Unit	35	22.6	59	38.0

Public Health Unit Name	Cases reported week 43	Rate per 100,000 population Reported week 43	Cases reported week 44	Rate per 100,000 population Reported week 44
City of Hamilton Public Health Services	160	27.0	180	30.4
Haldimand-Norfolk Health Unit	18	15.8	21	18.4
Halton Region Public Health	205	33.1	184	29.7
Niagara Region Public Health	92	19.5	118	25.0
Region of Waterloo Public Health and Emergency Services	94	16.1	96	16.4
Wellington-Dufferin-Guelph Public Health	55	17.6	48	15.4
<b>TOTAL CENTRAL WEST</b>	659	23.1	706	24.8
<b>TOTAL ONTARIO</b>	<b>6,109</b>	<b>41.1</b>	<b>6,384</b>	<b>42.9</b>

**Note:** Interpret information for the most recent week with caution due to reporting lags.

## Disclaimer

This document was developed by Public Health Ontario (PHO). PHO provides scientific and technical advice to Ontario's government, public health organizations and health care providers. PHO's work is guided by the current best available evidence at the time of publication.

The application and use of this document is the responsibility of the user. PHO assumes no liability resulting from any such application or use.

This document may be reproduced without permission for non-commercial purposes only and provided that appropriate credit is given to PHO. No changes and/or modifications may be made to this document without express written permission from PHO.

## Citation

Ontario Agency for Health Protection and Promotion (Public Health Ontario). Weekly epidemiologic summary: COVID-19 in Ontario – focus on October 25, 2020 to October 31, 2020. Toronto, ON: Queen's Printer for Ontario; 2020.

## For Further Information

For more information, email [cd@oahpp.ca](mailto:cd@oahpp.ca).

## Public Health Ontario

Public Health Ontario is an agency of the Government of Ontario dedicated to protecting and promoting the health of all Ontarians and reducing inequities in health. Public Health Ontario links public health practitioners, front-line health workers and researchers to the best scientific intelligence and knowledge from around the world.

For more information about PHO, visit [publichealthontario.ca](http://publichealthontario.ca).

